

SC 150A Electronic Speed Controller (SK300045)



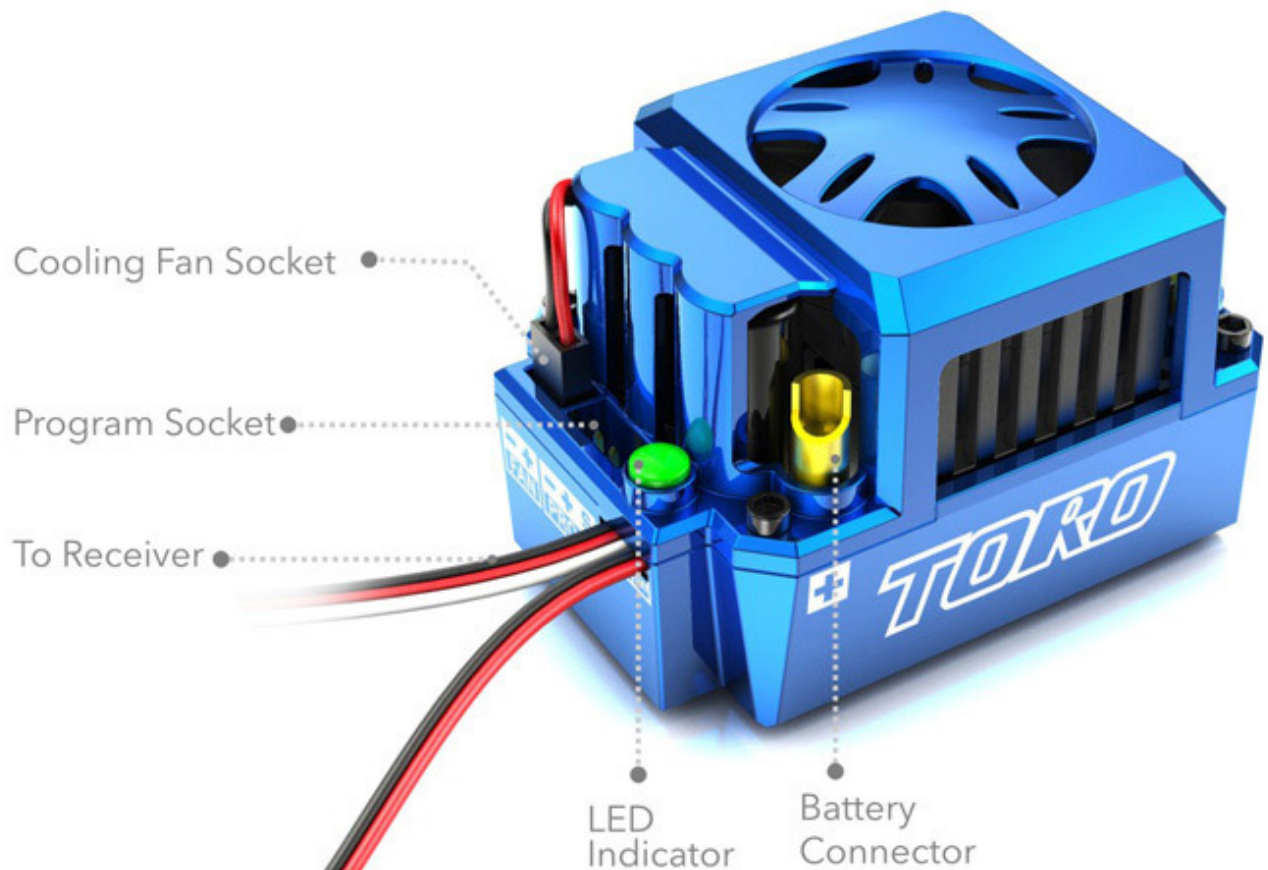
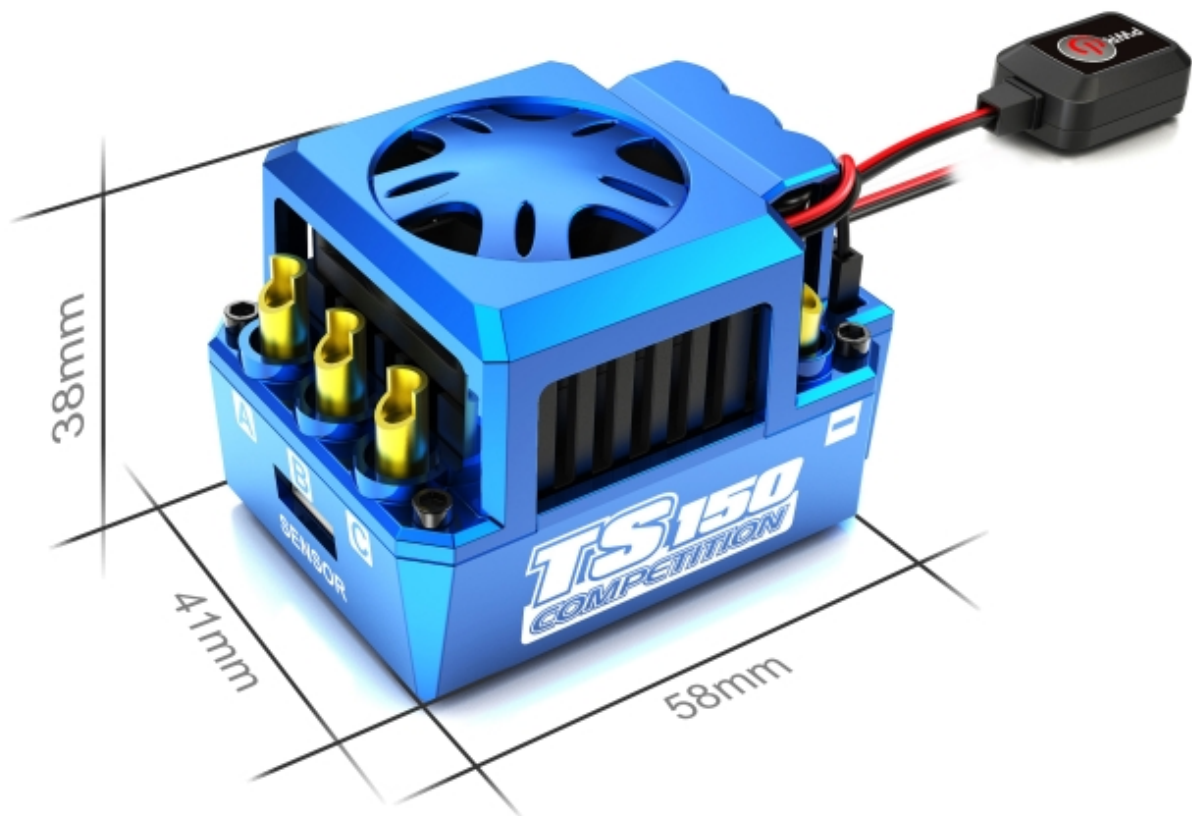
SC150A Advanced Timing System

Toro TS150 150A ESC is big power in a small package, intending for 1/8th buggies, truggies and monster trucks running up to 6S LiPo. The innovative new case allows for fan changes and built-in 6V/5A BEC.

Leading the industry not only in power handing ability but also size and features with Throttle Control, Drag Brake, Custom Brake Input Curve, Voltage Cutoff for LiPo, ESC and Motor Overheat Protection and much more.

As always, Toro TS150 150A ESC offers industry-leading software and firmware update functions and can be programmed by SkyLink via PC, Program Box and even your smart phone.

Compact Design





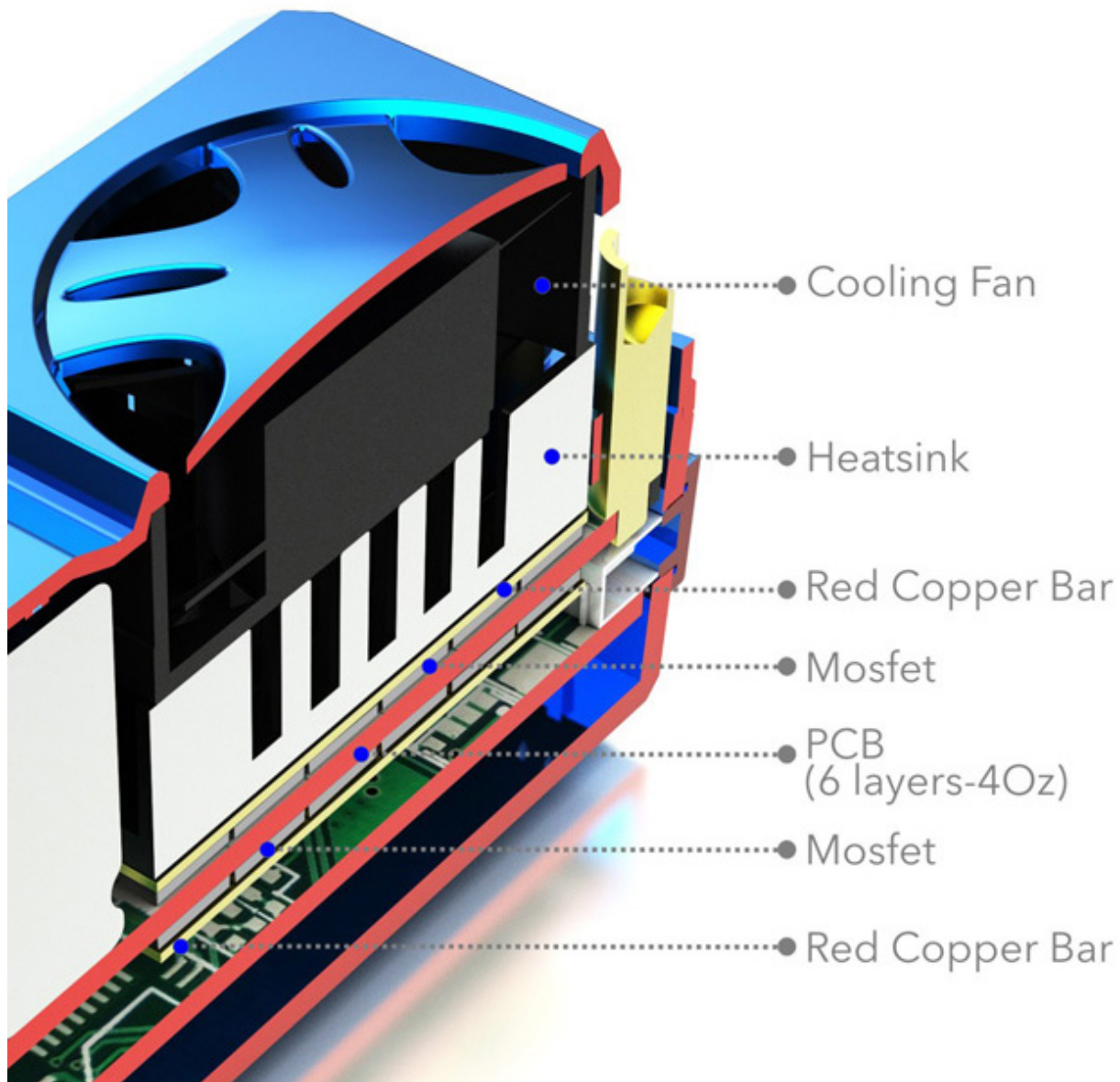
Electronic Power Switch

A simple push button operates the switch meaning to eliminate the problems associated with intermittent contact of an ordinary mechanical switch.





Less Resistance, Less Heat, More Efficiency



10 User Modifiable Profiles

The users could set and store 10 sets of profiles in the ESC. These data could be called out at any time without any special program setting. All the setting can be exported or imported so that the user could compare and analyze.



Safety Features



Low voltage protection
Motor and ESC overheat protection
Signal lost protection

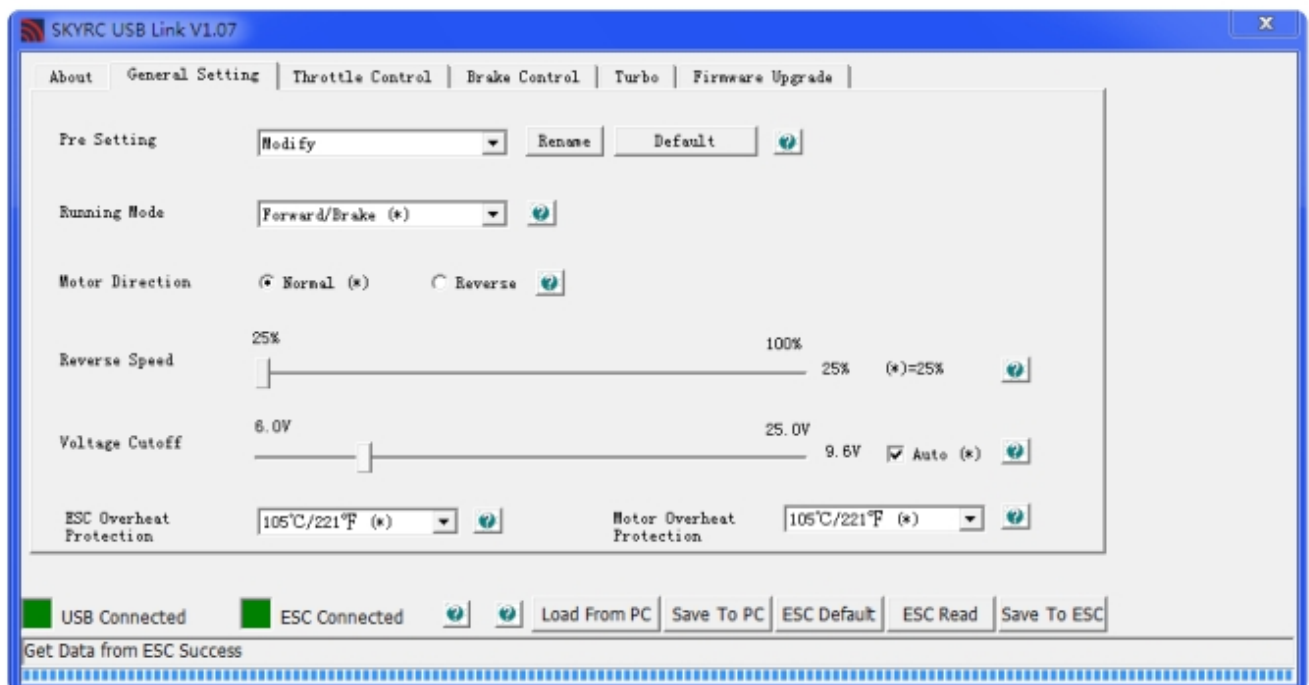
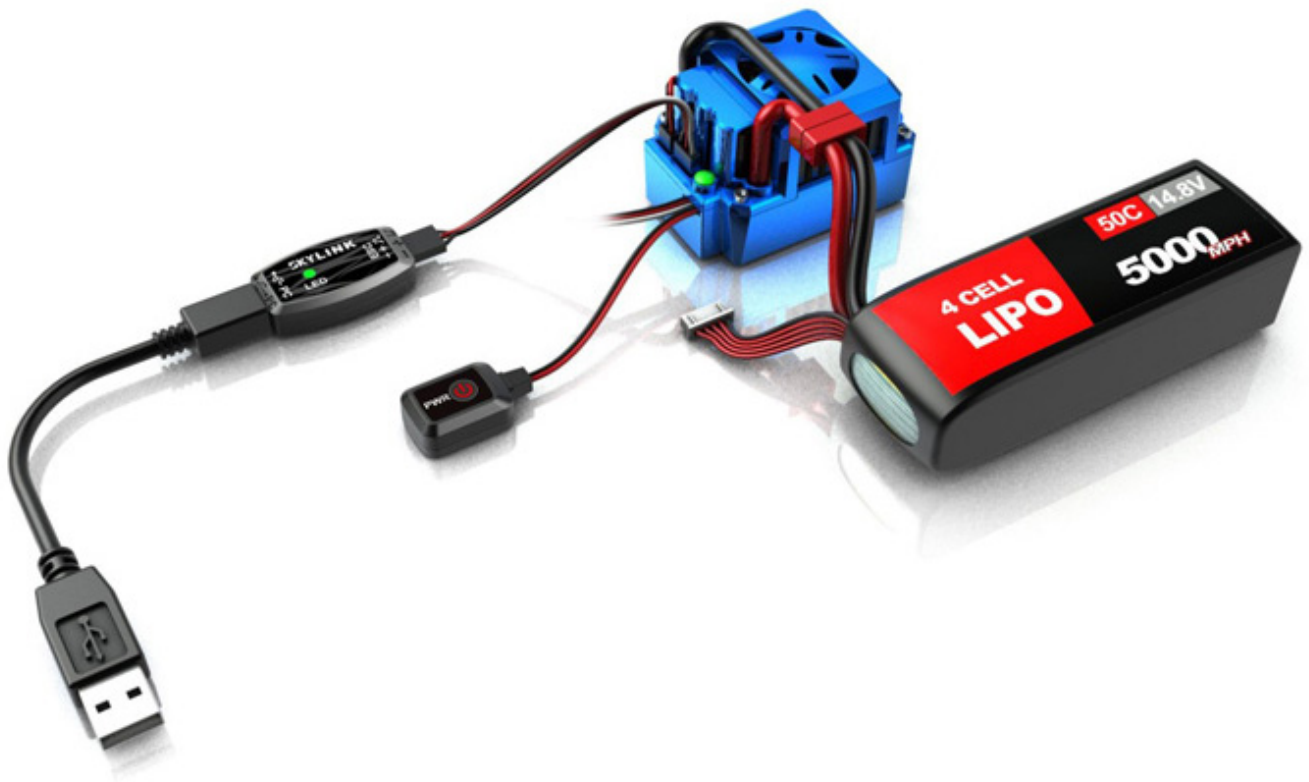
Firmware Update

The firmware can be updated by connecting the ESC to a PC or a smart phone.

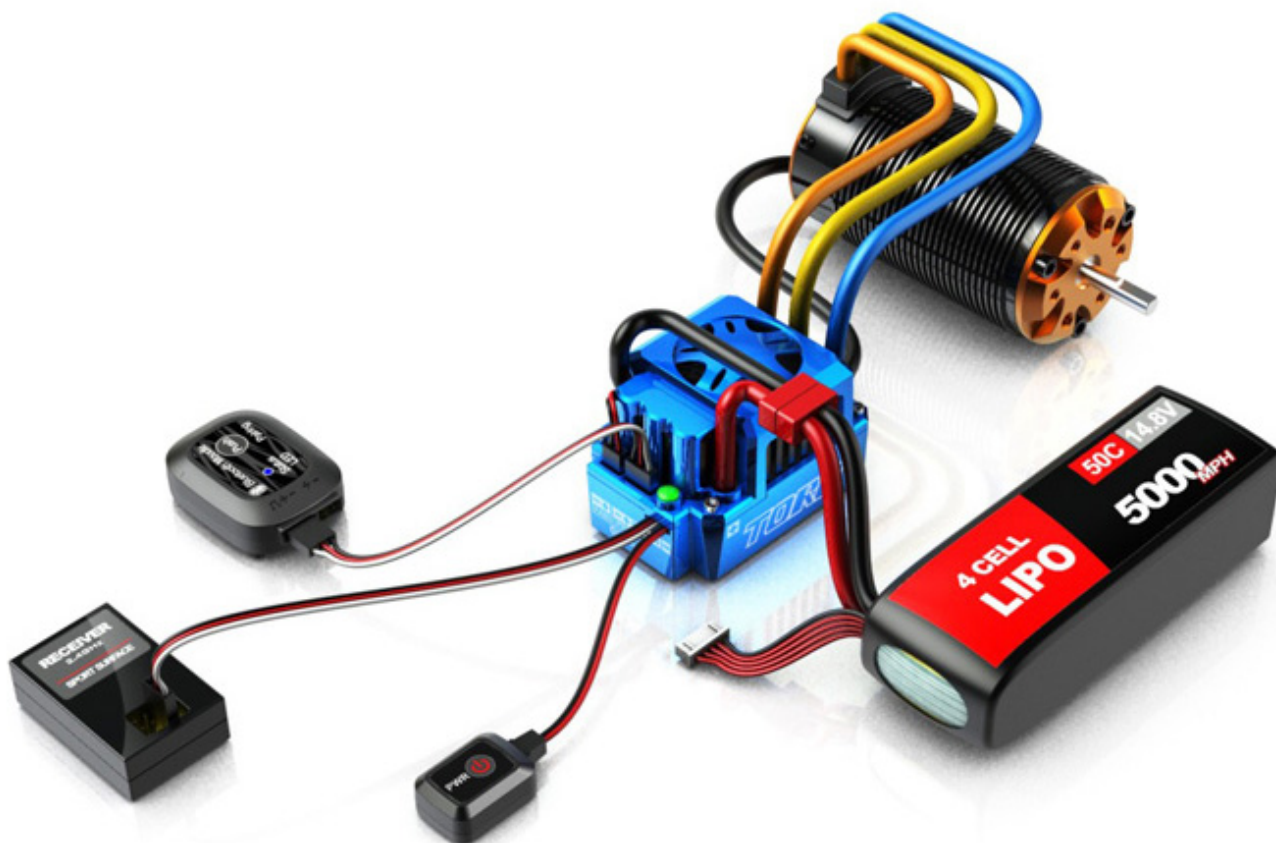


Programming Methods

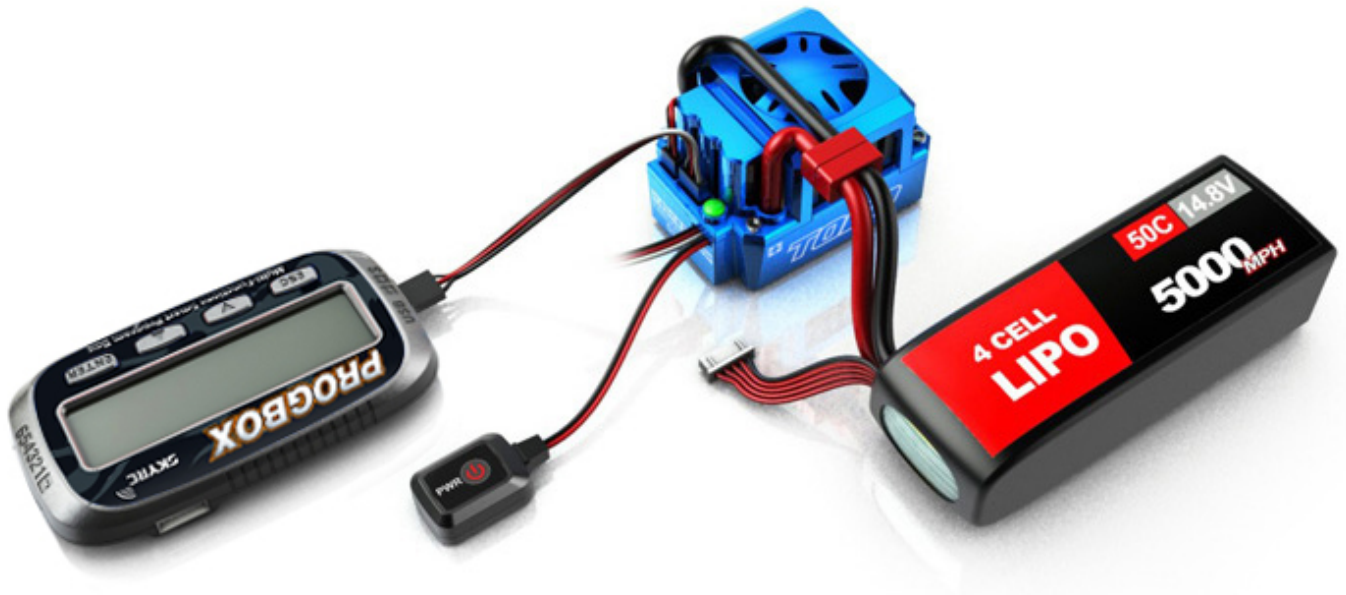
The ESC can be programmed with a PC connected with SKYLINK (SK-600013)



The ESC can be programmed with a smart phone via Bluetooth Module (SK-600058)



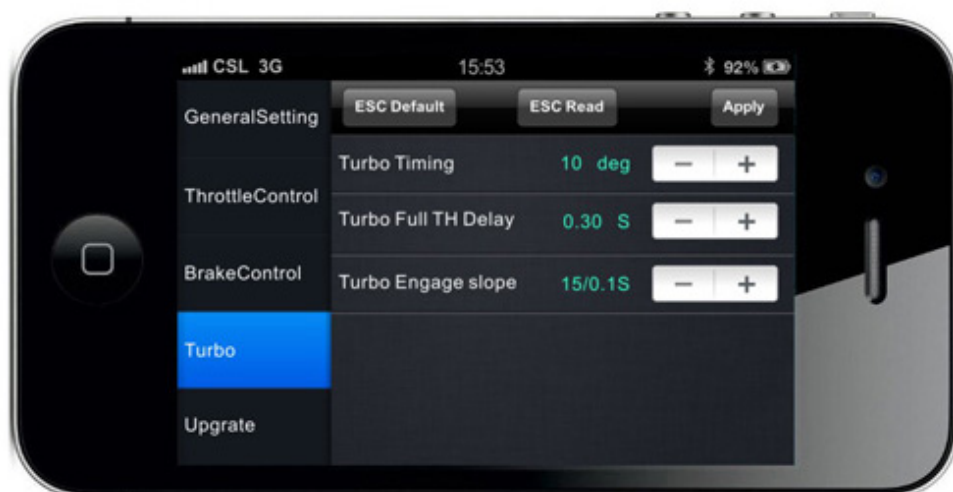
The ESC can be programmed with the PROGBOX (SK-600046)



Precise Programmable Items

Advanced Timing System

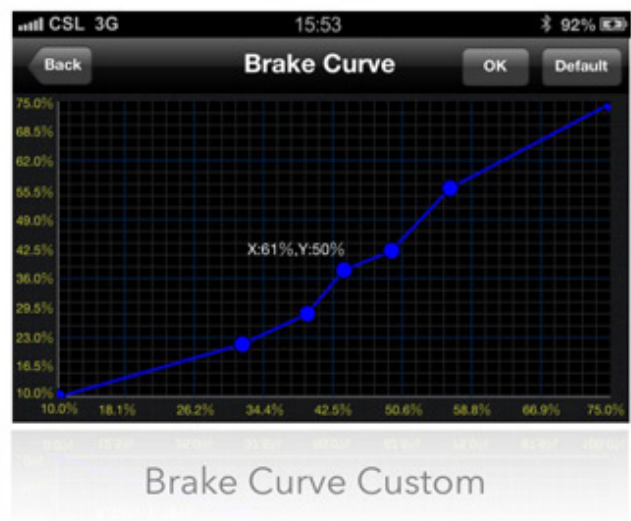
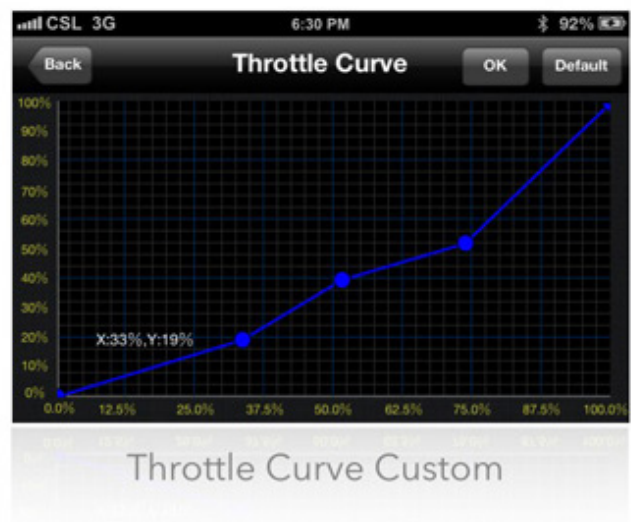
Users could set the turbo and boost timing which can improve the motor RPM to get its best performance.



Turbo Setting

Well-performed Throttle and Brake Control Function

Users could set the punch/brake control rate by point or customize the throttle/brake curve by themselves, and different customers' request for linear and power all can be met.



TECHNISCHE DATEN

Constant/Burst Current	150A / 950A
Motors	Sensor & Sensorless Brushless Motors
Cars	1/8 Buggy, Truck & Monster
Motor Limits	2-4S LiPo: $\leq 3000\text{KV}$, 2-6 Poles 5-6S LiPo: $\leq 2400\text{KV}$, 2-4 Poles
Resistance	0.0002 Ohm
Battery Cell Count	6-19S NiMH or 2-6S LiPo
BEC Output	6V 5A, Switched
Fan	6V 0.3A
Weight	95g (without wires)
Dimensions (LxWxH)	58x41x38mm

DOWNLOADS

-



[SkyRC Toro TS150A \[SK300045\] Manual \(768.4 KiB\)](#)

-



[SkyRC UsbLink V1.07.zip \(1.1 MiB\)](#)