

Synchronous 1000W/40A Balance Charger/Discharger (SK100069)

UNLEASHED CHARGING POWER

1000W 40A

SYNCHRONOUS
ALL PURPOSE MULTI-CHEMISTRY
BALANCE CHARGER/DISCHARGER

1-8S
LiPo/LiFe
LiIon/LiHV

1-20S
NiMH/NiCd

2-24V
Lead Acid



Ultimate 1000W/40A
Balance Charger/Discharger

Ultimate 1000W / 40A Balance Charger / Discharger

SKYRC Ultimate 1000W features with high efficiency with synchronous rectification technology, it is accurate and stable and also has some new features and functions. Users could set the terminal voltage by themselves and connect it to PC for PC control and firmware upgrade. What's more, users could also use it as Lithium Battery Meter and Lithium Battery Internal Resistance Meter. There are Automatic Charging Current Limit, Capacity Limit, Temperature Threshold and Processing Time Limit which makes the charger safe to use.

All-new Design



Large 2x16 LCD Display
for Easy Reading





Balance Port for Charging / Discharging



For some small batteries without main connector, you could use the battery socket to charge and discharge the battery to storage status.

LiHV Mode Available

The additional LiHV mode is able to charge the new generation of LiPo batteries with an end of charge voltage of 4.35 V.



Special Features

Special Features



Mega Power
1000W / 40A

Ultimate 1000W employs the circuit that features output power of 1000 watts. It can charge or discharge up to 20 cells of NiCd/NiMH or 8 series of Lithium batteries with maximum current of 40A.



Lithium Battery
Balancer

SKYRC Ultimate 1000W employs an individual-cell-voltage balancer. It isn't necessary to connect an external balancer for balance charging.



Program Data
Store/Load

The charger can store up to 10 different charge/discharge profiles for your convenience. Users can call out these data at any time without any special program setting.



Battery Meter

The user can check battery's total voltage, the highest voltage, the lowest voltage and each cell's voltage by this charger.

BATT/PROGRAM BATT METER → 4.20 4.19 4.19 U → MAIN 25.13U
4.18 4.18 4.19 U → HV.200U L4.182U



Battery Resistance
Meter

The user can check battery's total internal resistance and each cell's internal resistance.

1: 3mΩ 2: 2mΩ → 5: 4mΩ 6: 3mΩ
3: 3mΩ 4: 2mΩ → 7: 4mΩ 8: 3mΩ



Maximum Safety

Automatic Charging Current Limit
Capacity Limit
Temperature Threshold
Processing Time Limit



Terminal Voltage
Control

The charger allows user to set the charge/discharge end voltage.

TVC-YOUR RISK!
4.25U

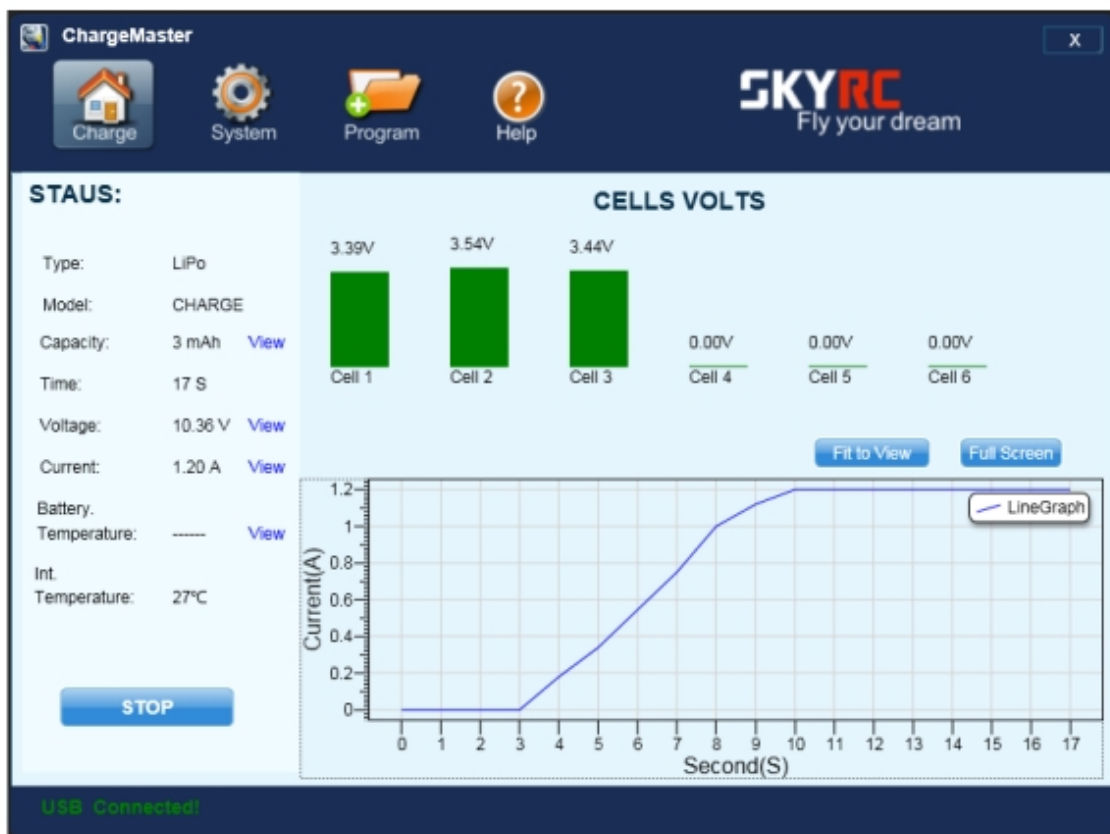
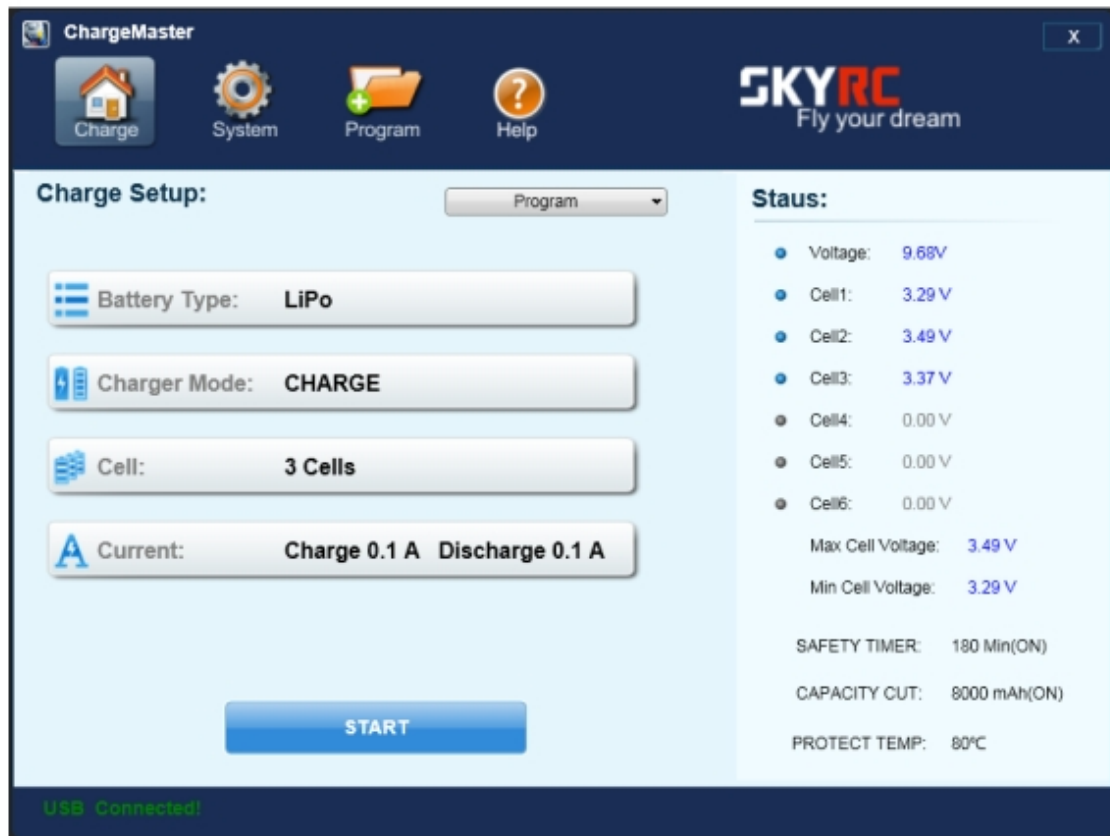


PC Control

The user can monitor pack voltage, cell voltage and other data during the charging, view charge data in realtime graphs, and can also control charging and update firmware from "Charge Master".

Charge Master

The user can monitor pack voltage, cell voltage and other data during the charging, view charge data in realtime graphs, and can also control charging and update firmware from "Charge Master".



Finally, Your Charger Gets Its Own App

Smart Phone Control via Wi-Fi Module (both iOS and Android)

This charger can be controlled and operated by smart phones via Wi-Fi module (optional part SK-600075).



TECHNICAL DATA

DC Input Voltage	11-30V
Controls	Button
Display Type	16 LCD
Display Backlight	Blue
Case Material	Metal
Cooling System	Built-in fan
PC Communications	USB Port for PC Control & Firmware Upgrade
External Port	Balance Socket XH, Temperature Probe Socket, Battery Socket, DC Input, Micro USB Port
Balance Port Charge Current	10-500mAH
Current Drain for Balancing	max. 800mA
Maximum Cells	LiPo/LiFe/LiIon: 1-8 cells

	NiMH/NiCd: 1-20 cells
	Pb: 2-24 volt
Charge Current	max. 40A
Charge Wattage	1000W
Trickle Charging Current	50mA-300mA & Off
Discharge Current	0.1-8A
Regenerative Discharge Current	0.1-40A
Discharge Wattage	80W
Weight	1240g
Dimensions (LxWxH)	156x138x76mm

DOWNLOADS

 [Charge Master Windows Software \(49.7 MiB\)](#)