

## D200 200W/20A Balance Charger/Discharger (SK100097)



SKYRC D200 is a twin-channel charger with two independent circuits which can charge two different kinds of batteries simultaneously. It also supports power distribution in AC mode to get max charging power to shorten charging time. What's more, users could set the terminal voltage by themselves and connect it to PC for PC control and firmware upgrade. Besides that, users could also use it as Lithium Battery Meter and Battery Internal Resistance Meter or use this charger to solder as it has a Soldering Iron included. There are Automatic Charging Current Limit, Capacity Limit, Temperature Threshold and Processing Time Limit which makes the charger safe to use.



|   |                  |      |
|---|------------------|------|
| A | AC Max Power Set | 150W |
| B | AC Max Power Set | 50 W |

## Power Distribution

In AC mode, it supports power distribution, for example, Channel A-150W, then Channel B-50W, the total power is 200W.



### LIHV Mode Available

The additional LiHV mode is able to charge the new generation of LiPo batteries with an end of charge voltage of 4.35 V.

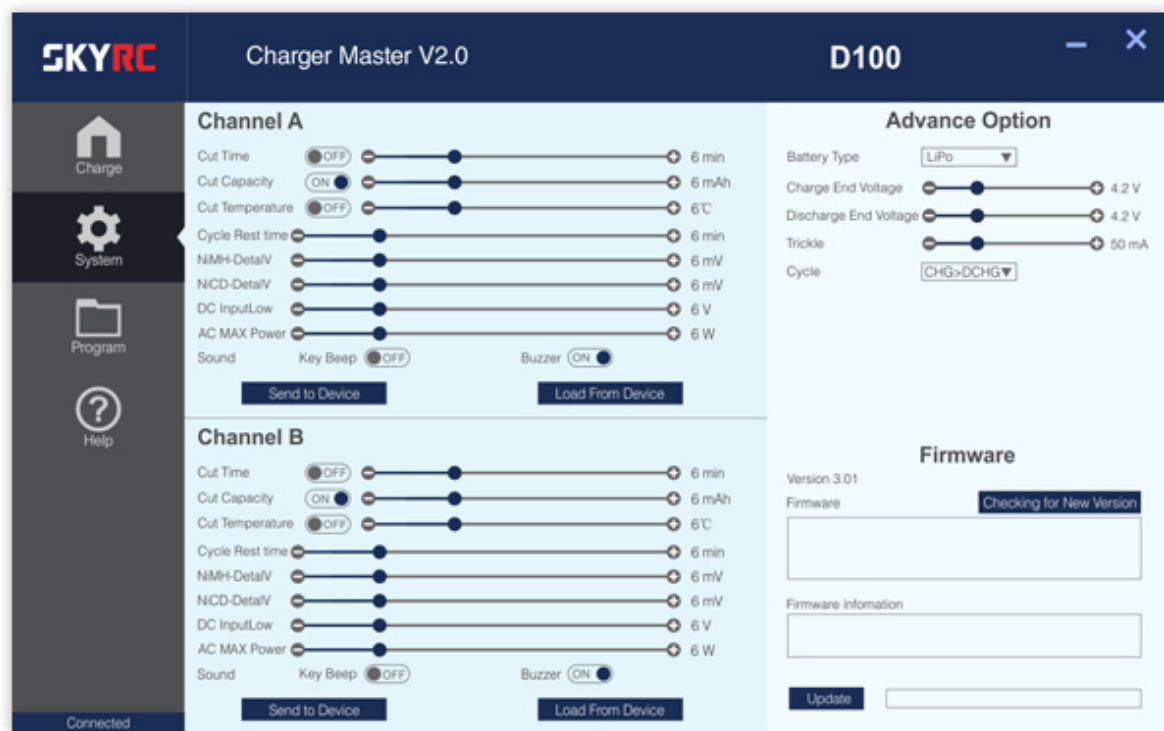
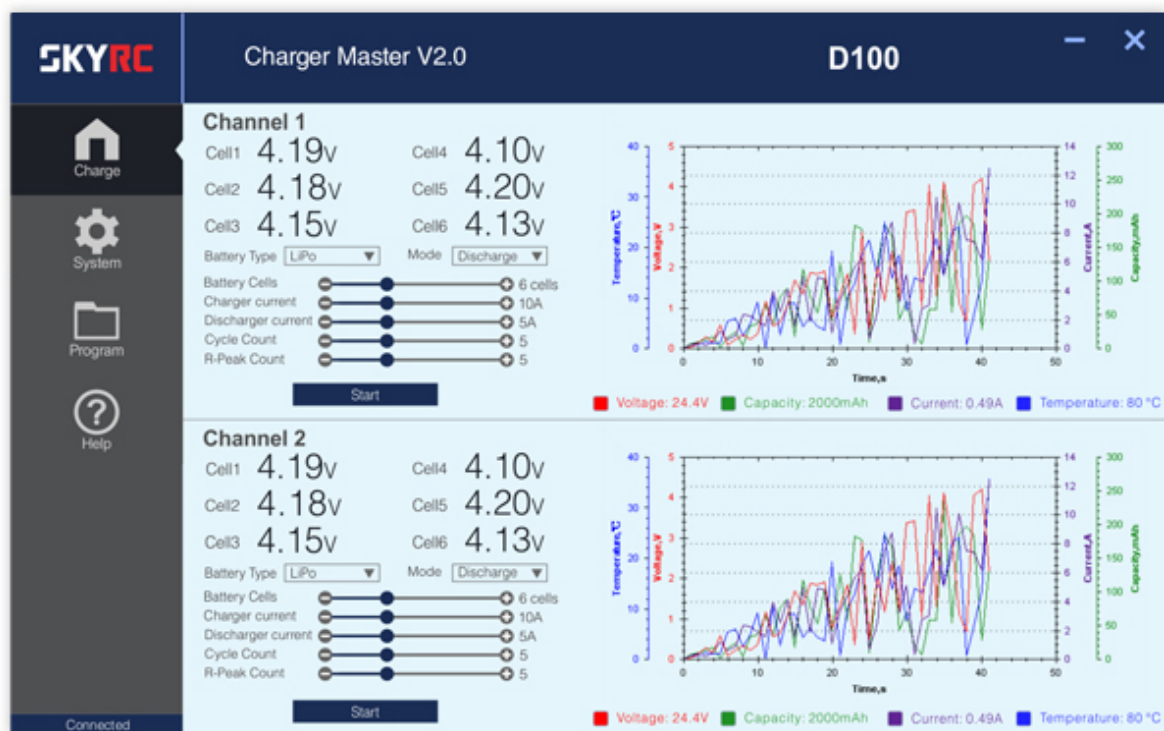
### Features

- Large screen LCD(128\*64)
- Terminal Voltage Control
- Re-peak Mode for NiMH/NiCd Battery
- Battery Meter
- Battery Internal Resistance Meter
- Soldering Iron: 60W MAX, 200-450 °C
- PC Communications: USB Port for PC Control & Firmware Upgrade
- Smart Phone Control & Monitor Via Wi-Fi Module( SK-600075 Optional Part)
- Two channels charge two different kinds of batteries simultaneously
- Support charging power distribution intelligently when operating with AC input

### Charge Master

The user can monitor pack voltage, cell voltage and other data during the charging, view charge data in realtime graphs, and can also control charging and update firmware from "Charge Master".

(Note: shown for D100 but is the same for D200 version)



## Finally, Your Charger Gets Its Own App

Smart Phone Control via Wi-Fi Module (both iOS and Android) This charger can be controlled and operated by smart phones via Wi-Fi module (optional part SK-600075).



**FINALLY, YOUR CHARGER  
GETS ITS OWN APP**  
*Smart Phone Control via Wi-Fi Module  
(both iOS and Android, optional  
part SK-600075)*



Scan with  
your **Smartphone**  
to download.

### TECHNICAL DATA

|                                  |  |
|----------------------------------|--|
| Input Voltage                    | AC 100-240V<br>DC 11-20V   |
| Charge Circuit Power             | DC Input 200W + 100W<br>AC Input 200W (Support Power Distribution) |
| Discharge Circuit Power          | 2 x 10W  |
| Charge Current                   | 0.1 - 1.0A<br>1.1A - 20.0A   |
| Discharge Current                | 0.1 - 5.0A   |
| Current Drian for Balancing Port | Max. 300mA / cell  |
| Trickle Charging Current         | 50mA - 300mA & OFF   |
| Display Backlight                | Blue   |
| Case Material                    | Plastic  |
| Maximum Cells                    | LiPo/LiFe/LiIon: 1-6 cells<br>NiMH/NiCd: 1-15 cells<br>Pb: 2-24V   |
| Weight                           | 1260g  |
| Dimensions (LxWxH)               | 180x165x72mm   |

### DOWNLOADS

 [SKYRC Charge Master Windows Software v3.01 \(2.5 MiB\)](#)