

D100 2x100W/10A Balance Charger/Discharger (SK100089)

AC/DC D100

Dual Balance
Charger / Discharger

power
2x100
watt

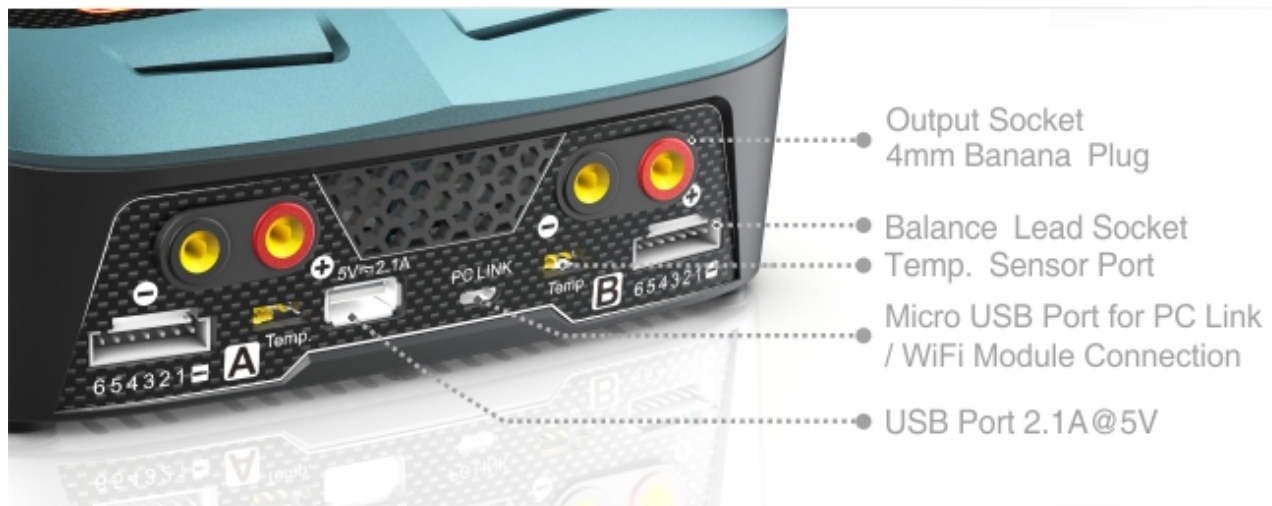


Li-Po 1-6 cell	LiHV 1-6 cell	Li-Fe 1-6 cell	Li-Ion 1-6 cell	Ni-MH 1-15 cell	Ni-Cd 1-15 cell	PB 2-20 V
-------------------	------------------	-------------------	--------------------	--------------------	--------------------	--------------

SKYRC D100 is a twin-channel charger with two independent circuits which can charge two different kinds of batteries simultaneously. It also supports power distribution in AC mode to get max charging power to shorten charging time. What's more, users could set the terminal voltage by themselves and connect it to PC for PC control and firmware upgrade. Besides that, users could also use it as Lithium

Battery Meter and Battery Internal Resistance Meter. There are Automatic Charging Current Limit, Capacity Limit, Temperature Threshold and Processing Time Limit which makes the charger safe to use.





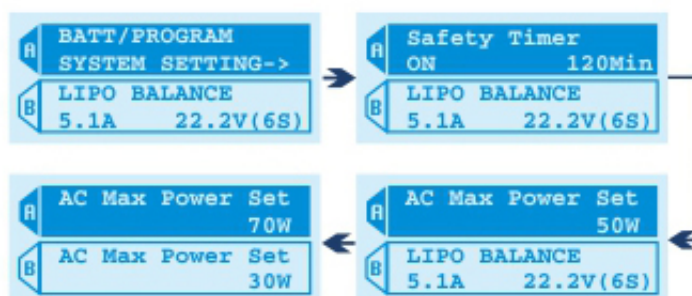
Tilt Stand Design

The tilt stand can support the chargers at different tilt angles so that the users can get best operational experience.



Twin-channel Charger

SKYRC D100 allows you to plug 2 batteries into one charger simultaneously, and it will intelligently and automatically charge 2 batteries at once.



Power Distribution

In AC mode, it supports power distribution, for example, Channel A-70W, then Channel B-30W, the total power is 100W.



LIHV Mode Available

The additional LiHV mode is able to charge the new generation of LiPo batteries with an end of charge voltage of 4.35 V.

Special Features



Lithium Battery
Balancer

SKYRC D100 employs an individual-cell-voltage balancer. It isn't necessary to connect an external balancer for balance charging.



Maximum Safety

Automatic Charging Current Limit
Capacity Limit
Temperature Threshold
Processing Time Limit



Program Data
Store/Load

The charger can store up to 20 different charge /discharge profiles for each channel. You can keep the data pertaining to program setting of the battery of continuous charging or discharging. Users can call out these data at any time without any special program setting.



Battery Meter

The user can check battery's total voltage, the highest voltage, the lowest voltage and each cell's voltage by this charger.

4.19	4.15	4.18V
4.15	4.19	4.18V
4.19	4.15	4.18V
4.15	4.19	4.18V



Battery Resistance
Meter

The user can check battery's total internal resistance and each cell's internal resistance.

005	003	003	mΩ
005	003	003	mΩ
005	003	003	mΩ
005	003	003	mΩ



PC Control

The user can monitor pack voltage, cell voltage and other data during the charging, view charge date in realtime graphs, and can also control charging and update firmware from "Charge Master".



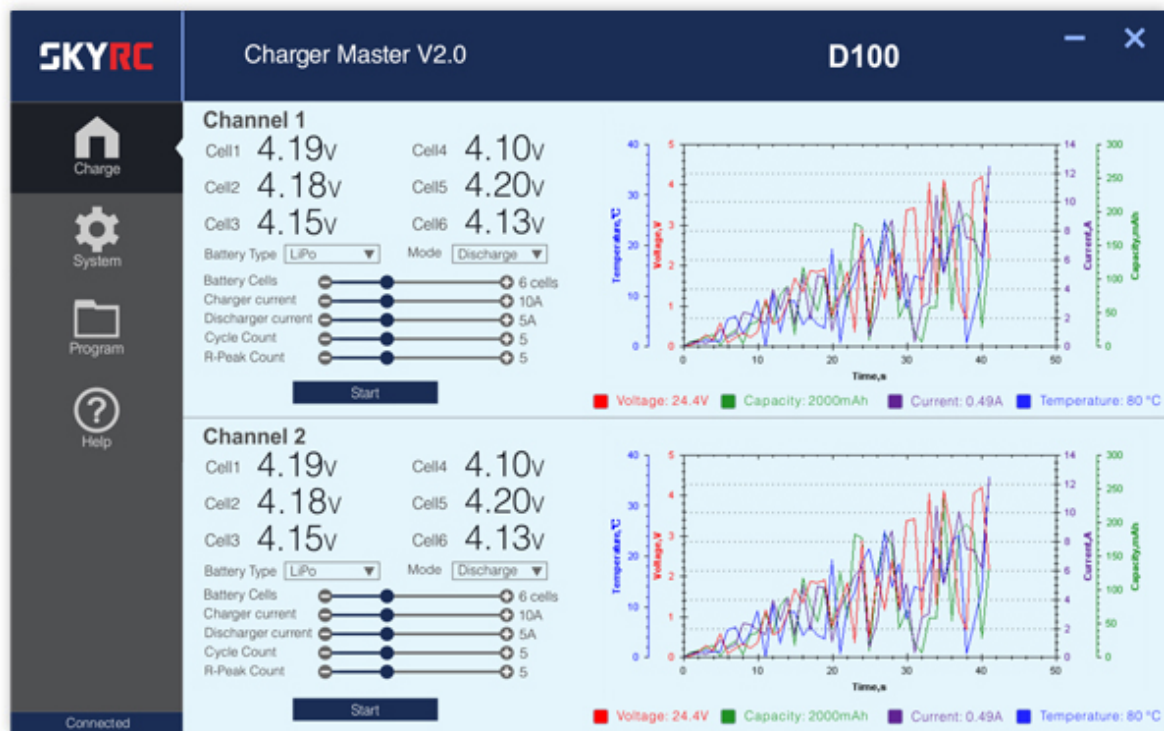
Terminal Voltage
Control

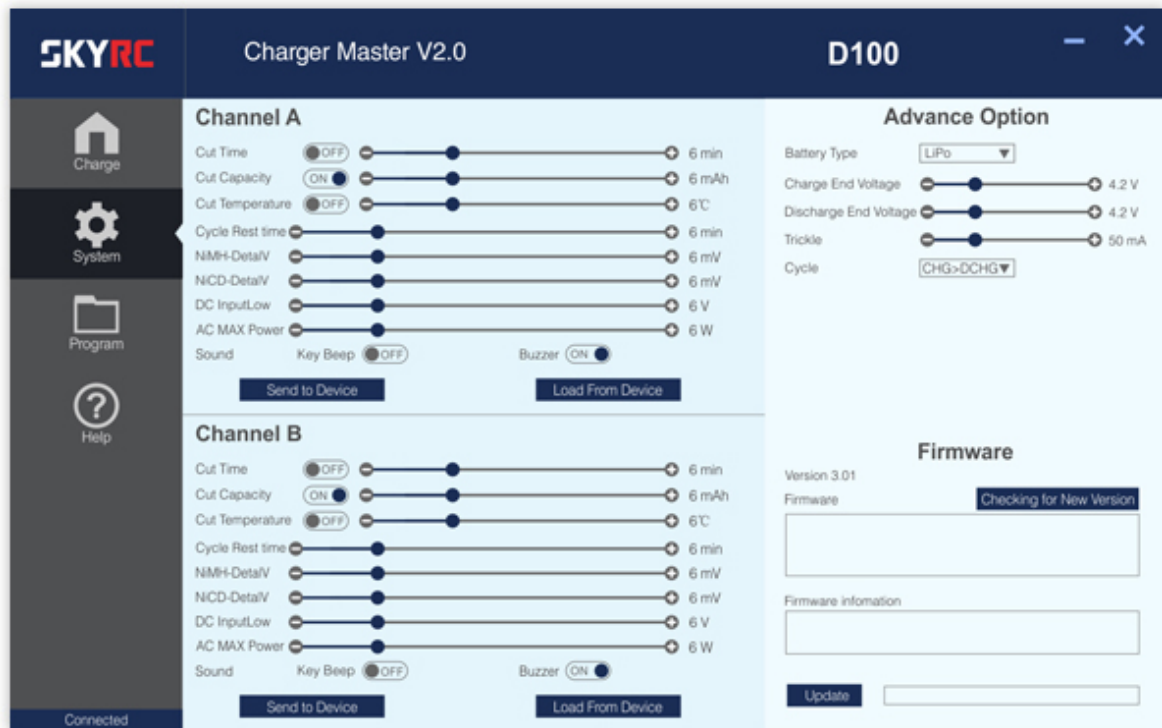
The charger allows user to change the end voltage. (for expert user only)

R	TVC-YOUR RISK!		
	4.25V		
II	4.19	4.15	4.18V
	4.15	4.19	4.18V

Charge Master

The user can monitor pack voltage, cell voltage and other data during the charging, view charge data in realtime graphs, and can also control charging and update firmware from "Charge Master".





Finally, Your Charger Gets Its Own App

Smart Phone Control via Wi-Fi Module (both iOS and Android) This charger can be controlled and operated by smart phones via Wi-Fi module (optional part SK-600075).



TECHNICAL DATA

Input Voltage	AC 100-240V DC 11-18V
Charge Circuit Power	DC Input 2 x 100W AC Input 100W (Support Power Distribution)
Discharge Circuit Power	2 x 10W
Charge Current	0.1 - 10.0A
Discharge Current	0.1 - 5.0A
Current Drian for Balancing Port	Max. 200mA / cell
Trickle Charging Current	30mA - 300mA & OFF
Display Backlight	Blue
Case Material	Plastic
Maximum Cells	LiPo/LiFe/LiIon: 1-6 cells NiMH/NiCd: 1-15 cells Pb: 2-20V
Weight	975g
Dimensions (LxWxH)	153x163x72mm

DOWNLOADS

 [D100 Instruction Manual \(3.5 MiB\)](#)

 [SKYRC Charge Master Windows Software v3.01 \(2.5 MiB\)](#)

 [SKYRC D100 Firmware Upgrade Tool V1.04 \(127.6 KiB\)](#)