

Q200 300W/10A Balance Charger/Discharger (SK100104)

Quattro Balance Charger / Discharger

Charges/Discharges up to
4 Batteries at once

Q200

AC/DC INPUT



Li-Po 1-6 cell	LiHV 1-6 cell	Li-Fe 1-6 cell	Li-Ion 1-6 cell	Ni-MH 1-15 cell	Ni-Cd 1-15 cell	PB 2-20 V
-------------------	------------------	-------------------	--------------------	--------------------	--------------------	--------------

SKYRC Q200 is a quattro charger with four independent circuits which can charge four different kinds of batteries simultaneously. It also supports power distribution in AC mode to get max charging power to shorten charging time. What's more, users could set the terminal voltage by themselves and connect it to PC for PC control and firmware upgrade. Besides that, users could also use it as Lithium Battery Meter and Battery Internal Resistance Meter as well. There are Automatic Charging Current Limit, Capacity Limit, Temperature Threshold and Processing Time Limit which makes the charger safe to use.

4

Independent Circuits

480×320

Color LCD Display

4

Channels
Power Distribution

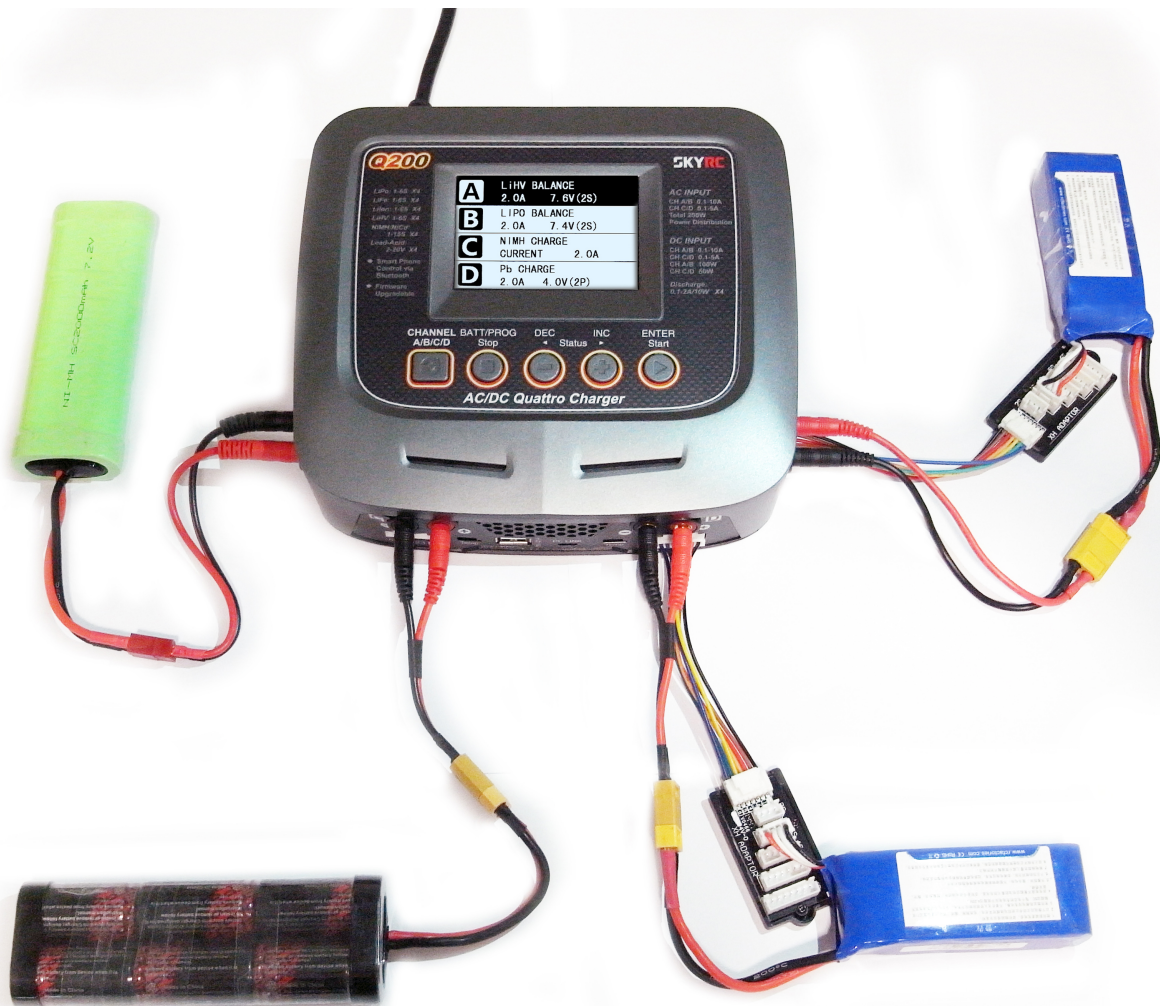
A	AC Max Power Set 65W
B	AC Max Power Set 80W
C	AC Max Power Set 35W
D	AC Max Power Set 20W

AC INPUT

CH A+CH C=100W CH B+CH D=100W
CH A/CH B: 50-100W CH C/CH D: 0-50W

Power Distribution

In AC mode, it supports power distribution, for example, Channel A = 65W and C = 35W, then Channel B = 80W and D = 20W, the total power is 200W.



4 Charging Outputs

The charger can handle up to four different battery types at the same time and charge them simultaneously.

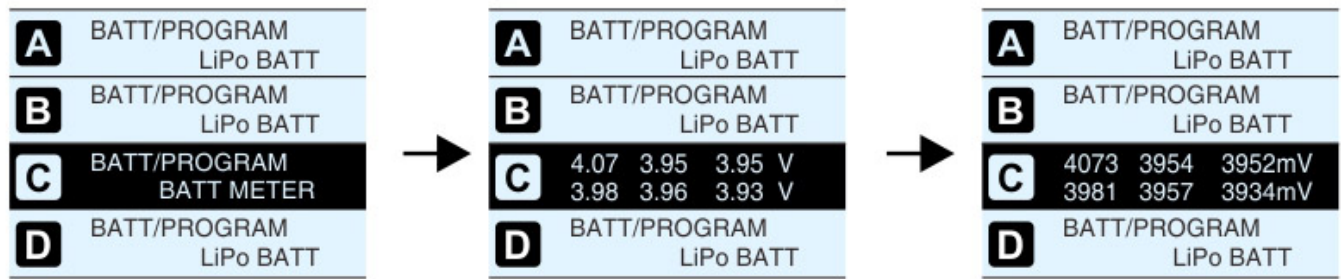
As well it has a LiHV Mode Available

The additional LiHV mode is able to charge the new generation of LiPo batteries with an end of charge voltage of 4.35 V.

Voltage Calibration

During the manufacturing process every Q200 production unit gets tested and calibrated after highest

factory standards. Ambitious users who trust their own expensive equipment more or who prefer their personal fluke to serve as reference have the possibility to adjust the Q200 factory calibration by a few counts.

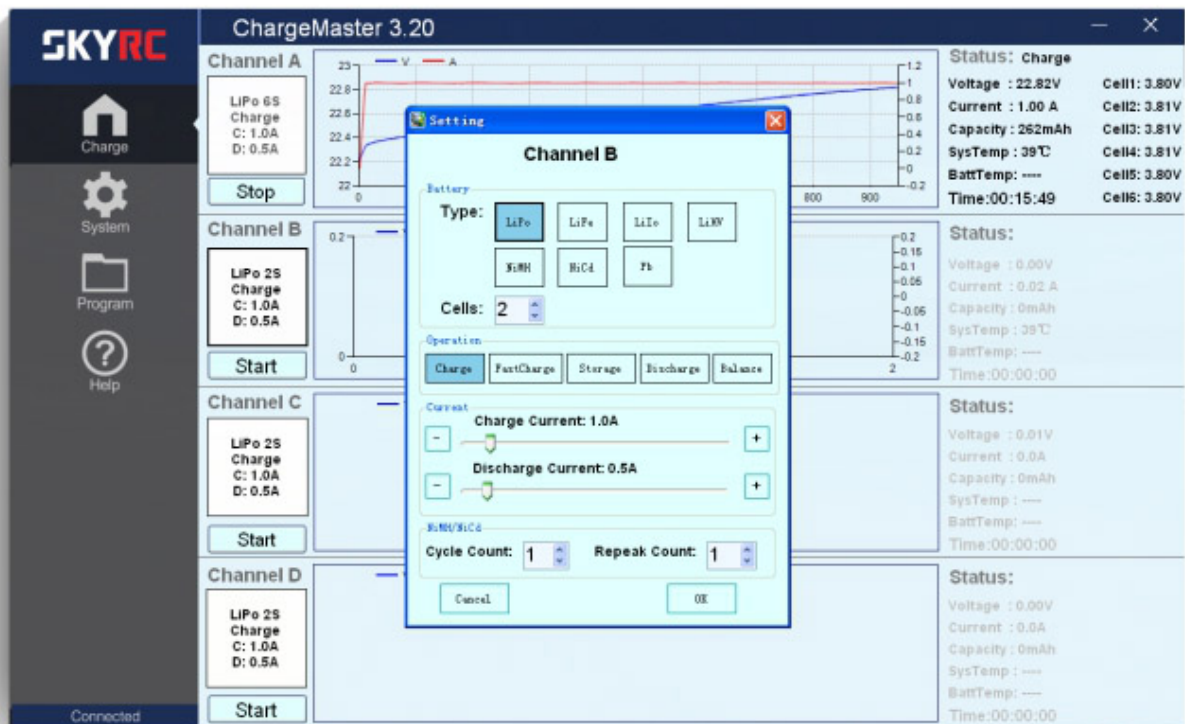
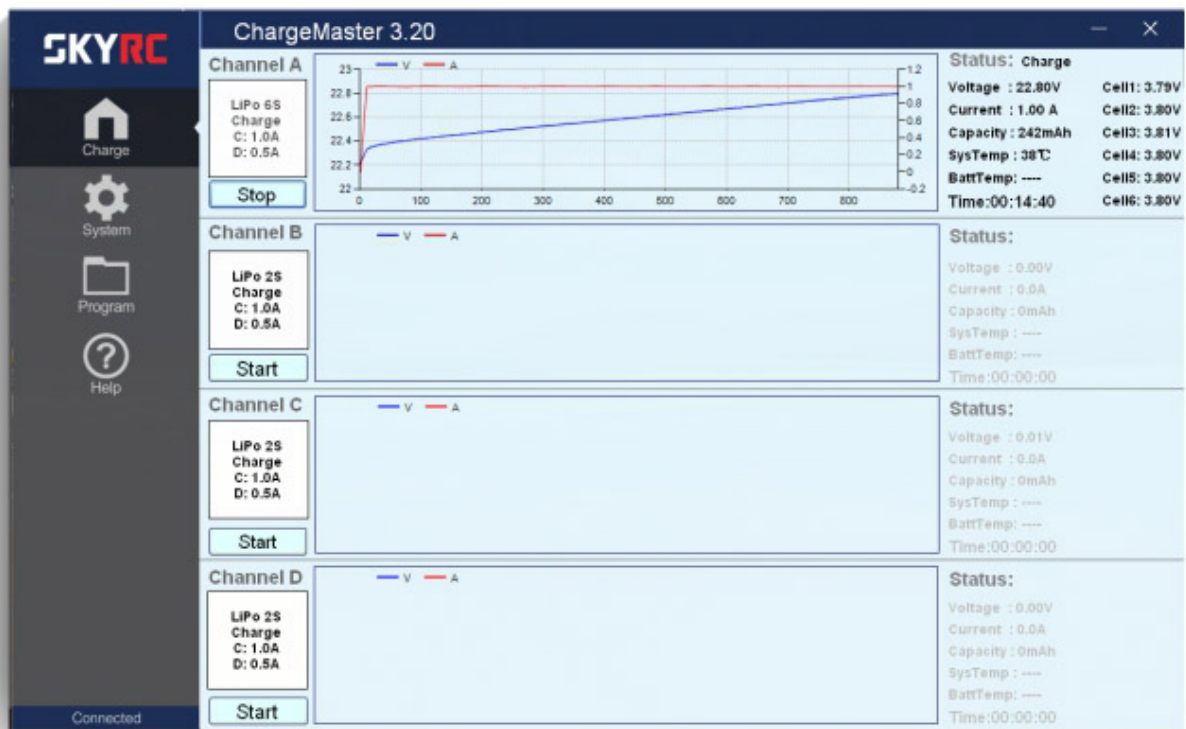


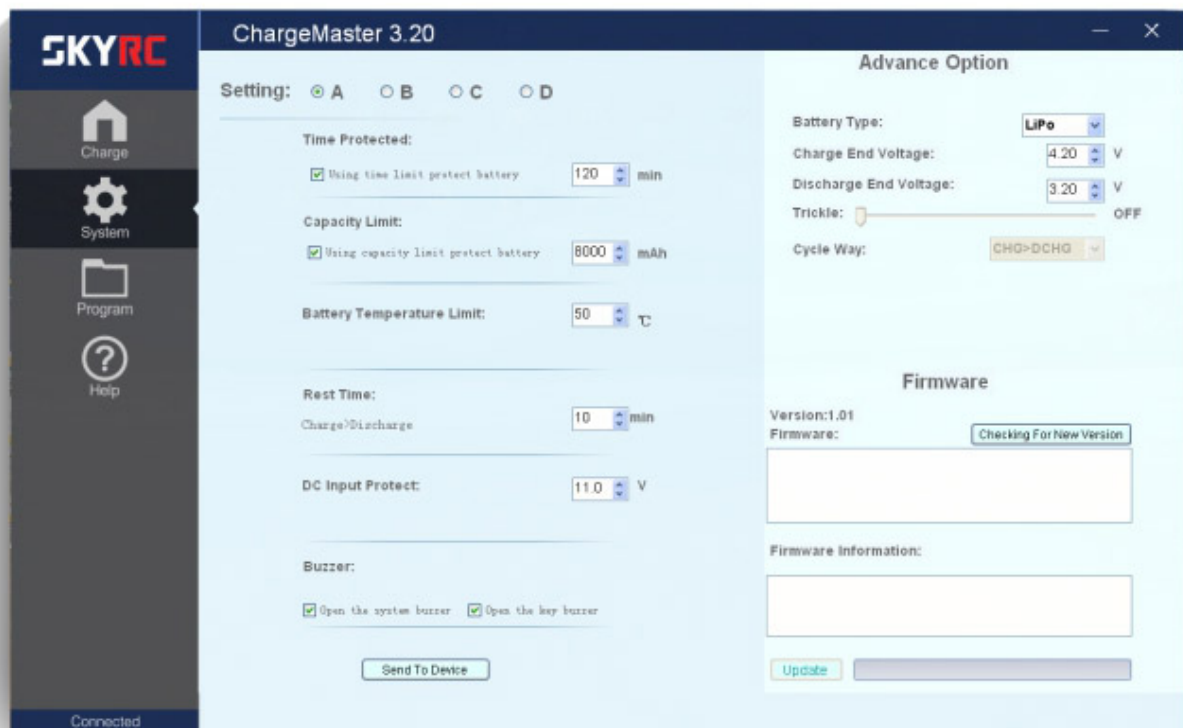
Features

- Large screen LCD
- Terminal Voltage Control
- Re-peak Mode for NiMH/NiCd Battery
- Battery Meter
- Battery Internal Resistance Meter
- PC Communications: USB Port for PC Control & Firmware Upgrade
- "Scan to Go" function with the SkyCharger App
- Four channels charge four different kinds of batteries simultaneously
- Support charging power distribution intelligently when operating with AC input

Charge Master

The user can monitor pack voltage, cell voltage and other data during the charging, view charge data in realtime graphs, and can also control charging and update firmware from "Charge Master".





Enhance your charger with the SkyCharger APP

The Bluetooth 4.0 connectivity allows the user to remote control and monitor the Q200 comfortably through an app on a portable device such as smartphone, iPad, or iPhone. The iOS app can be downloaded from iTunes Store, the Android app from Google Play Store. Operation of the app is self-explanatory and the same on iOS and on Android. Explicit pairing is not required; after download and installation just activate Bluetooth on your mobile device and launch the app. Q200 and your device will establish Bluetooth connection automatically.



Scan with
your Smartphone
to download.

TECHNICAL DATA

Input Voltage

AC 100-240V

DC 11-18V

Charge Circuit Power

CH "A" & CH "B" = 100W

DC Input

CH "C" & CH "D" = 50W

Charge Circuit Power

CH "A" + CH "C" = 100W

AC Input

CH "B" & CH "D" = 100W

or

CH "A" / CH "B" = 50-100W

CH "C" / CH "D" = 0-50W

Discharge Circuit Power	4 x 10W
Charge Current Range	CH "A" / CH "B" = 0,1-10A CH "C" / CH "D" = 0,1-5A
Discharge Current Range	0.1 - 2.0A (4x)
Current Drian for Balancing Port	Max. 200mA / cell
Trickle Charging Current	50mA - 300mA & OFF
Display Backlight	Blue
Case Material	Plastic
Maximum Cells	LiPo/LiFe/LiIon: 1-6 cells NiMH/NiCd: 1-15 cells Pb: 2-20V
Weight	1325g
Dimensions (LxWxH)	197x182x71mm

DOWNLOADS

 [SKYRC Charge Master Windows Software for Q200 \(2.7 MiB\)](#)