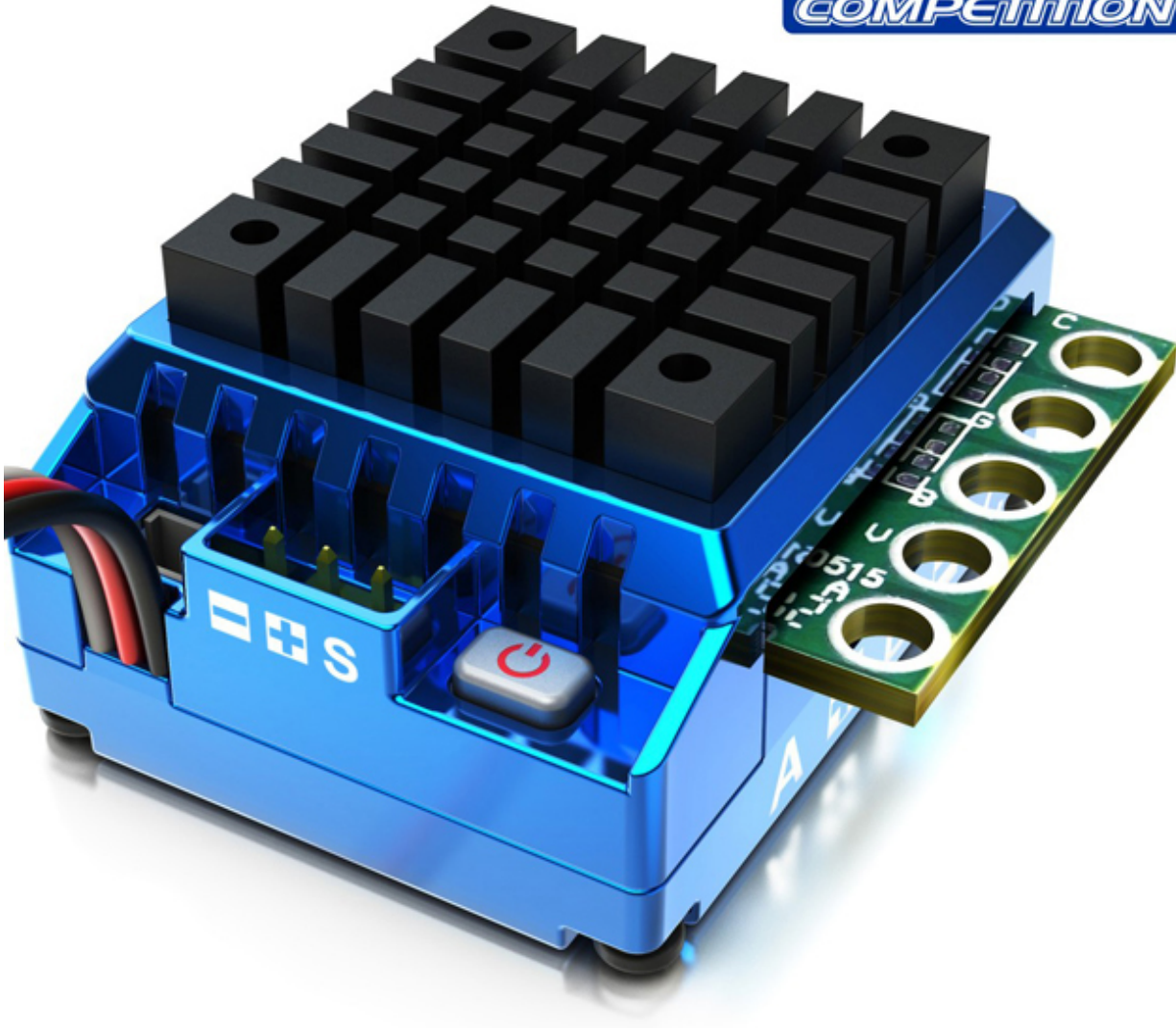


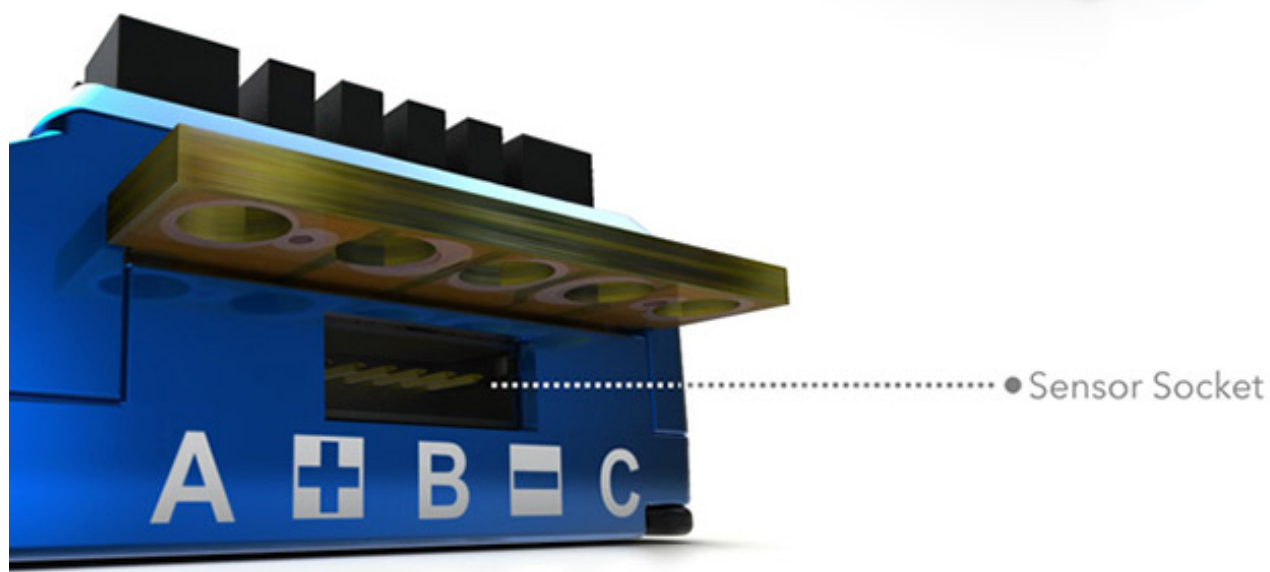
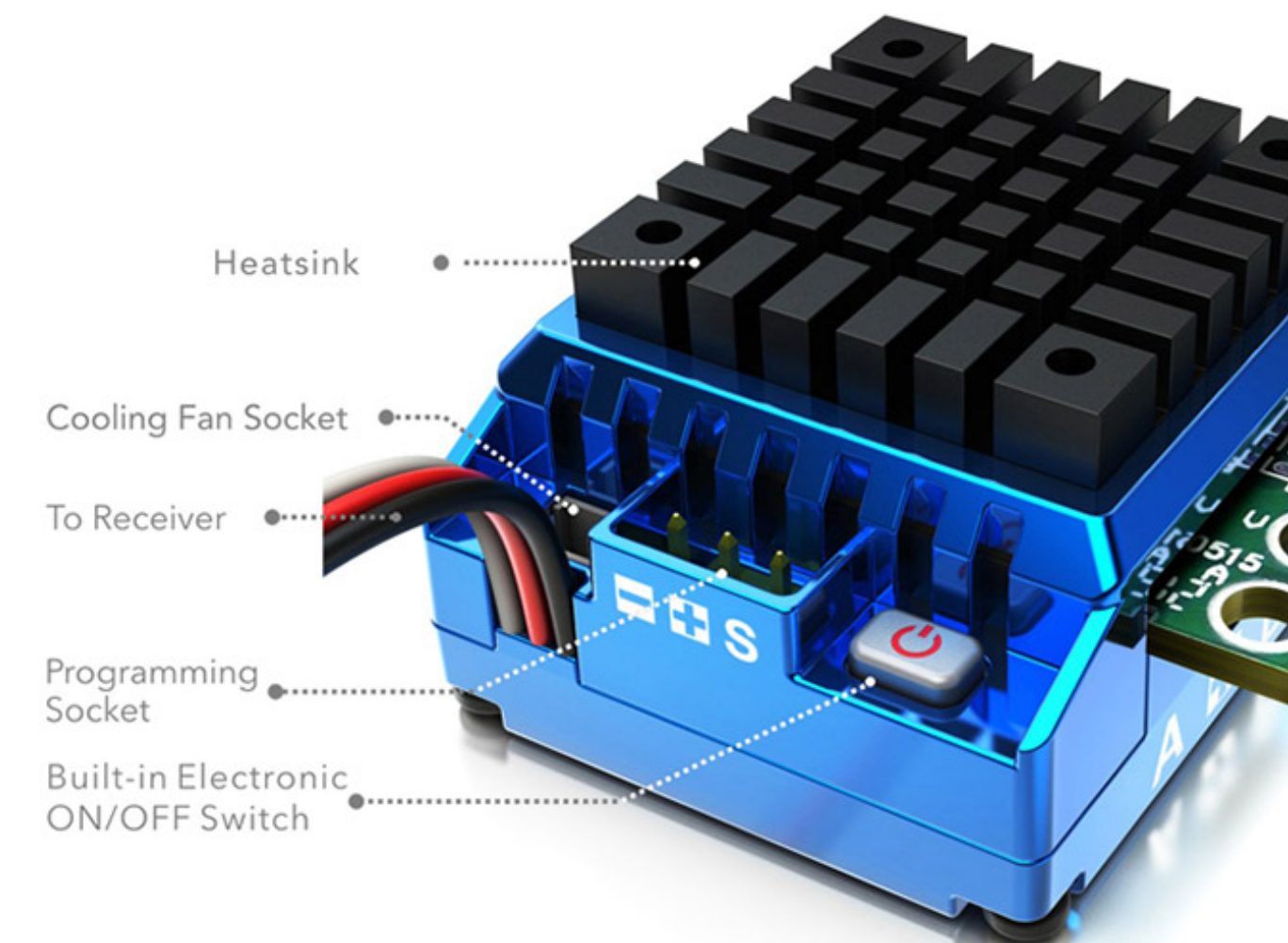
## TS 120A Electronic Speed Controller (SK300044)



### TS120A Advanced Timing System

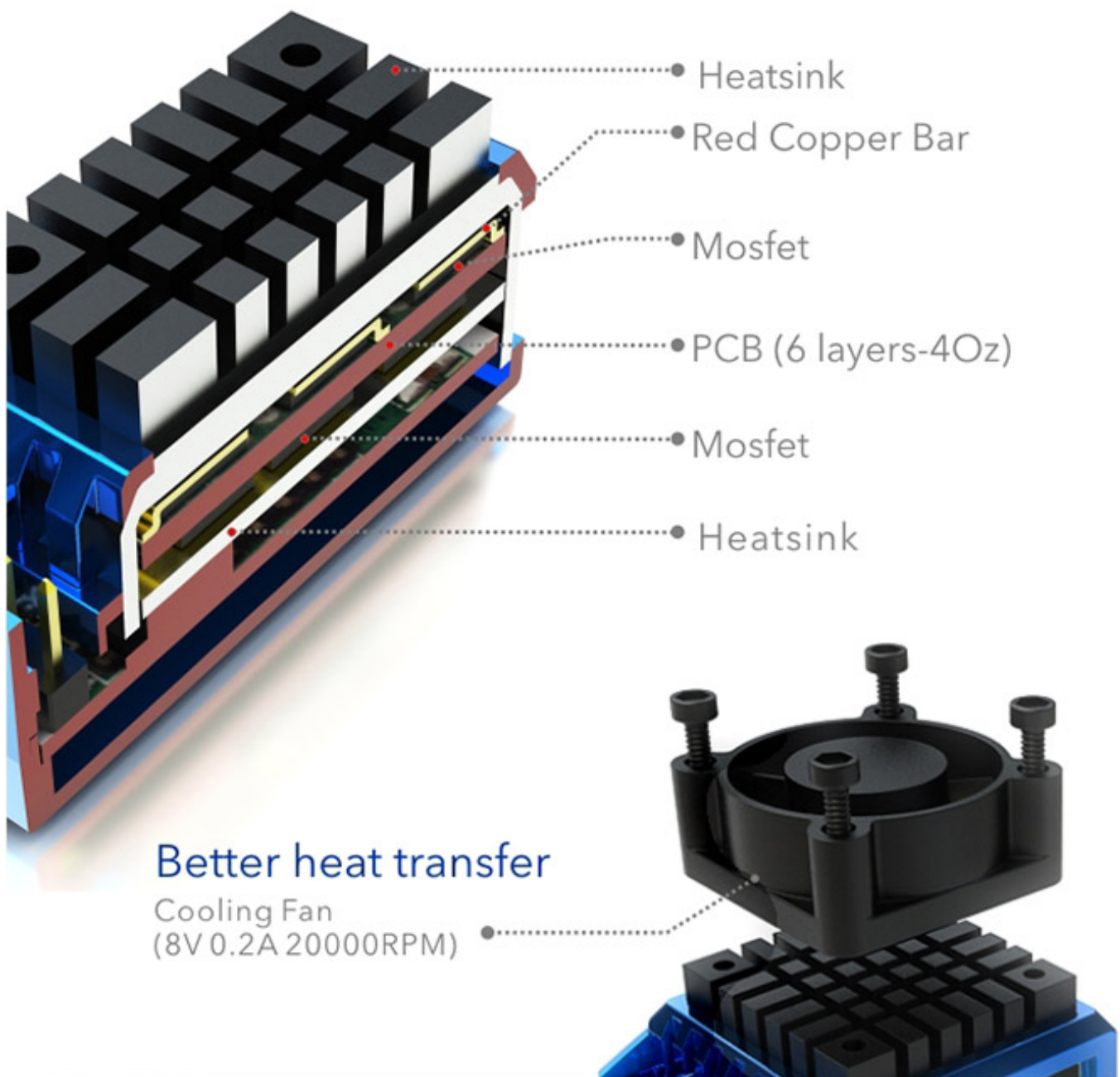
Toro TS 120A ESC for 1/10th Scale Car is designed for the use with 2S to 3S LiPo battery packs, has a 3.5T motor limit and features a 6V/3A BEC system. This feature does away with the need to use a separate receiver battery pack.







Less Resistance, Less Heat, More Efficiency



## 10 User Modifiable Profiles

The users could set and store 10 sets of profiles in the ESC. These data could be called out at any time without any special program setting. All the setting can be exported or imported so that the user could compare and analyze.



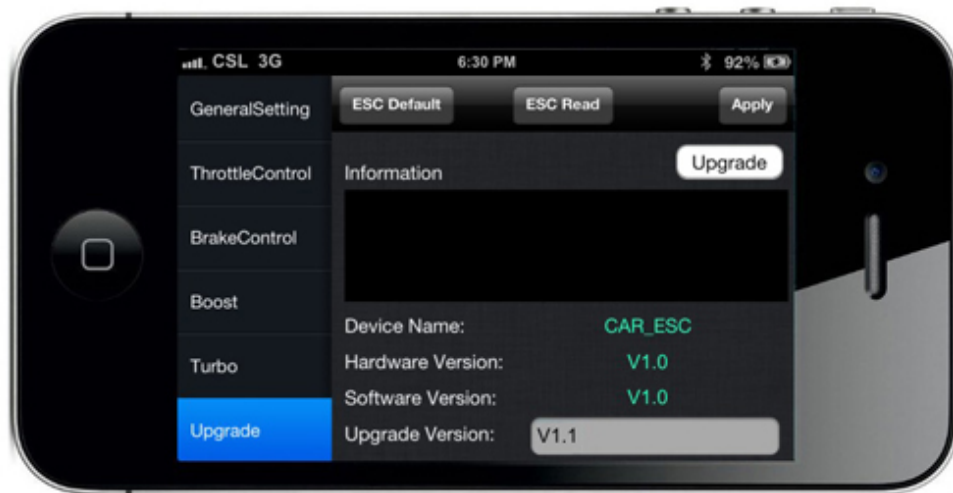
## Safety Features



Low voltage protection  
Motor and ESC overheat protection  
Signal lost protection

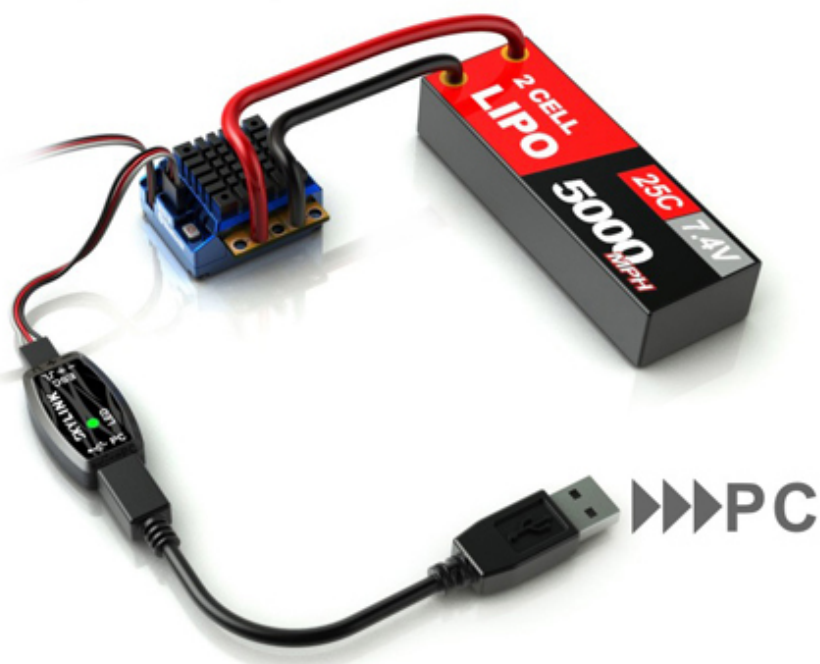
## Firmware Update

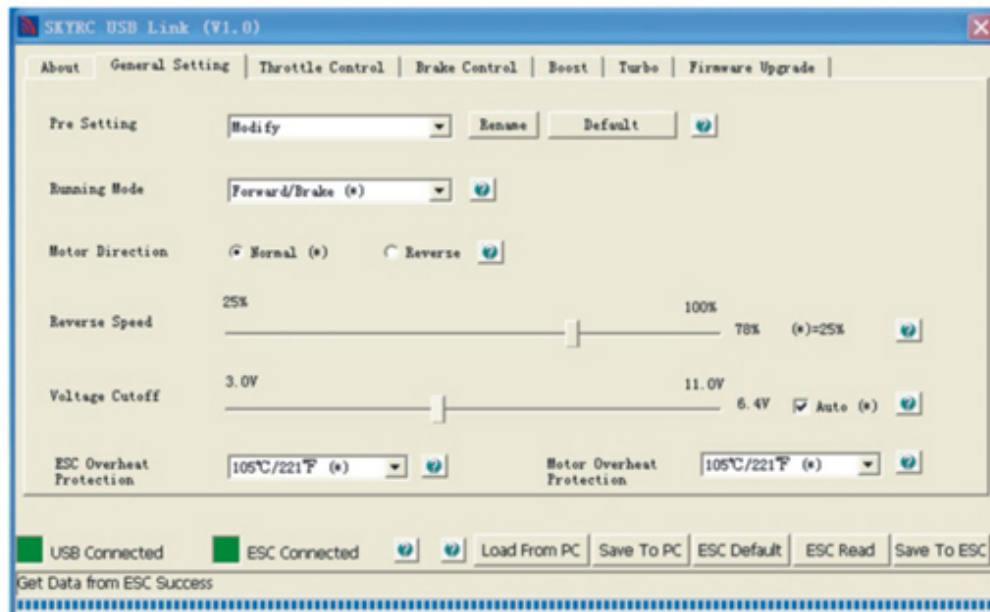
The firmware can be updated by connecting the ESC to a PC or a smart phone.



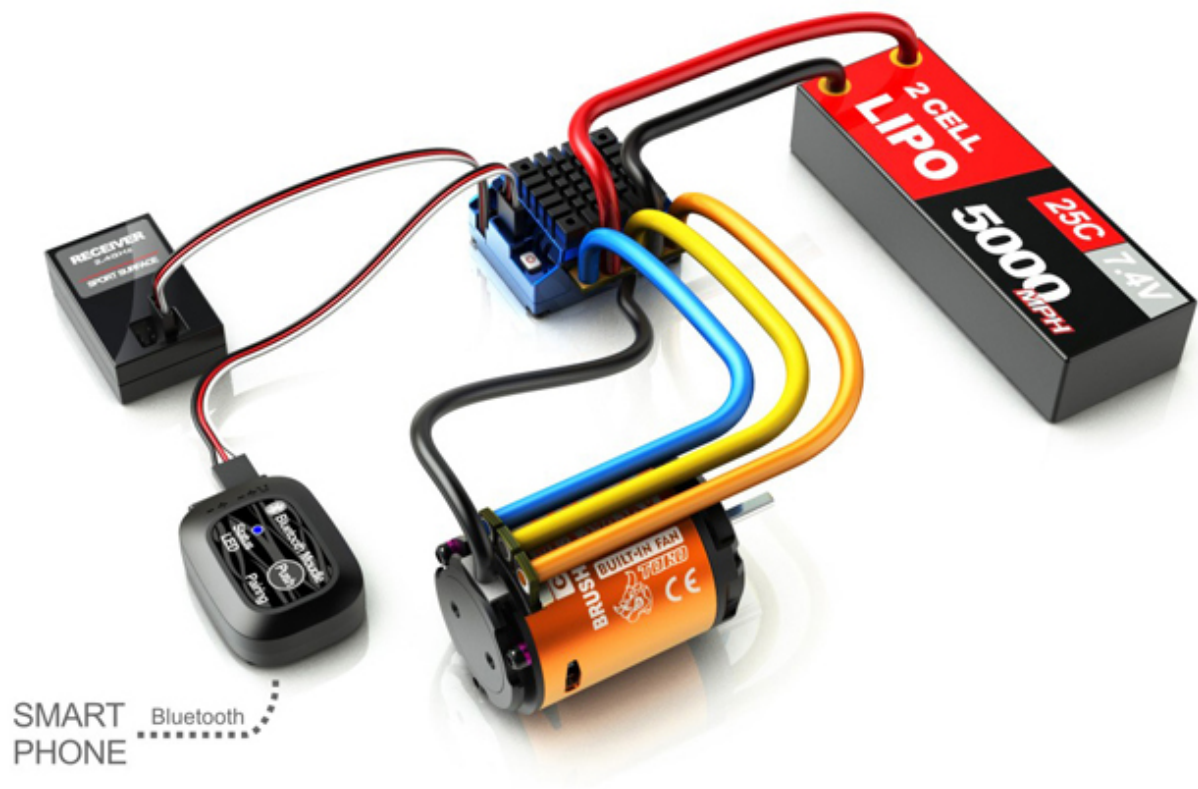
## Programming Methods

The ESC can be programmed with a PC connected with SKYLINK (SK-600013)





The ESC can be programmed with a smart phone via Bluetooth Module (SK-600058)



The ESC can be programmed with the PROGBOX (SK-600046)





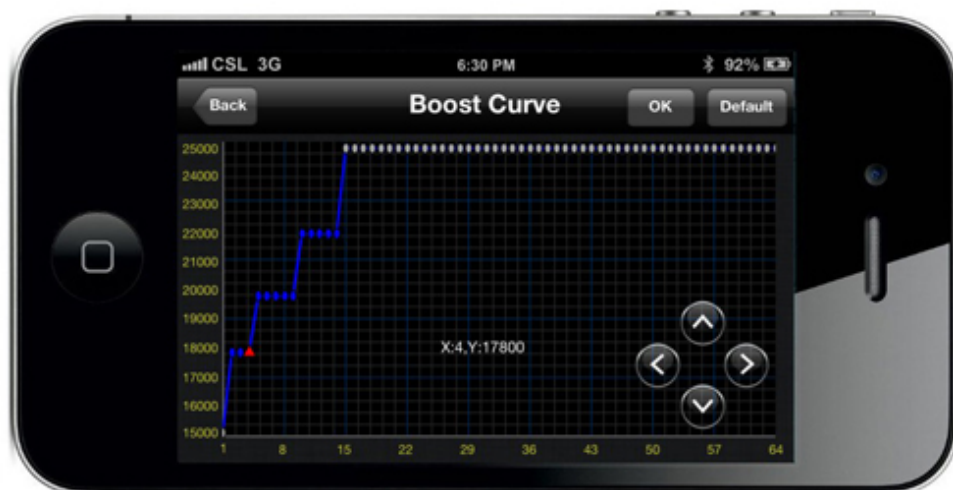
## Precise Programmable Items

### Advanced Timing System

Users could set the turbo and boost timing which can improve the motor RPM to get its best performance.



Boost Timing Setting



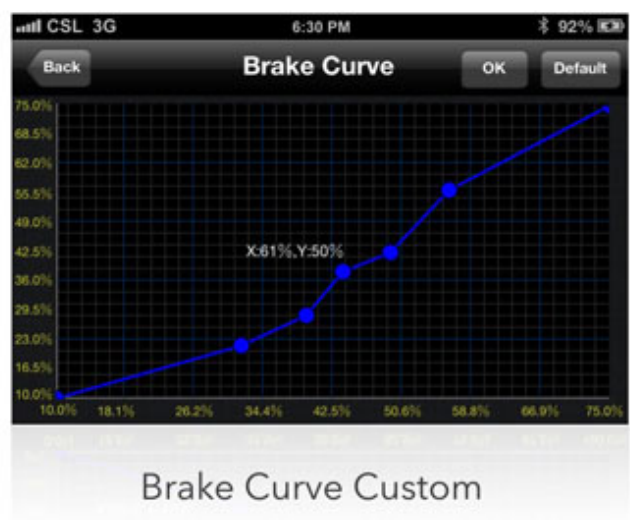
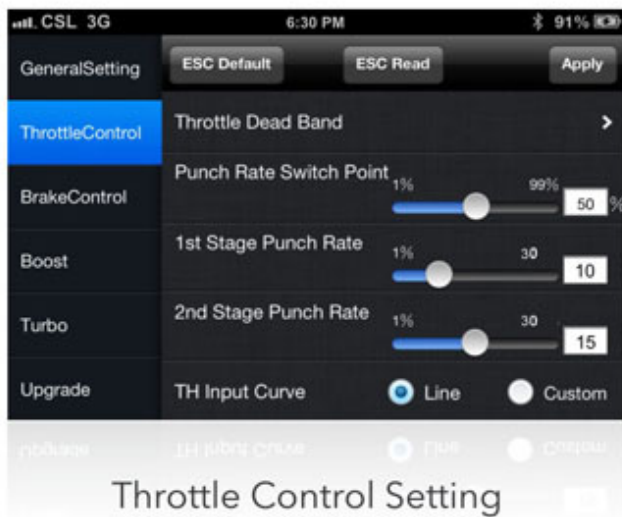
Boost Curve Custom



Turbo Timing Setting

## Well-performed Throttle and Brake Control Function

Users could set the punch/brake control rate by point or customize the throttle/brake curve by themselves, and different customers' request for linear and power all can be met.



## TECHNISCHE DATEN

Constant/Burst Current  
Motors  
Cars

Motor Limits

Resistance

120A / 760A  
Sensor & Sensorless Brushless Motors  
1/10 and 1/12 Buggy & Truck  
1/10 and 1/8 Crawlers  
5-6S NiMH or 2S LiPo:  $\geq 3.5T$  (1/10 Buggy),  $\geq 5.5T$  (1/10 Truck)  
8-9S NiMH or 3S LiPo:  $\geq 5.5T$  (1/10 Buggy),  $\geq 8.5T$  (1/10 Truck)  
0.0003 Ohm

Battery Cell Count	4-9S NiMH or 2-3S LiPo
BEC Output	6V 3A, Linear
Fan	5V 0.2A, Max. 12.6V
Weight	45g (without wires)
Dimensions (LxWxH)	39x38x20mm

## DOWNLOADS

- 



[SkyRC Toro TS120A \[SK300044\] Manual \(643.3 KiB\)](#)

- 



[Software SkyRC USBLink V1.07 \(1,1 MiB\)](#)