

## B6AC+ v2 50W/6A Balance Charger/Discharger (SK100009-15)

### SKYRC B6AC+ v2 Professional Balance Charger/Discharger



6A Charging / 2A Discharging

Li-Po 1-6 cell	Li-Fe 1-6 cell	Ni-MH 1-15 cell	Li-Ion 1-6 cell	Ni-Cd 1-15 cell	PB 2-20 cell
-------------------	-------------------	--------------------	--------------------	--------------------	-----------------

SKYRC B6AC+ V2 is the upgraded version for well-known IMAX B6AC+ V1. Compared with B6AC+ V1, it is more accurate and stable and also has some new features and functions. Users could set the terminal voltage by themselves and connect it to PC for PC control and firmware upgrade. What's more, users could also use it as Lithium Battery Meter and Battery Internal Resistance Meter. There are Automatic Charging Current Limit, Capacity Limit, Temperature Threshold and Processing Time Limit which makes the charger safer than V1.

SKYRC B6AC+ V2 is a high-performance, micro processor control charge/discharge station with

battery management suitable for use with all current battery types, with integral equalizer for six-cell Lithium- Polymer (LiPo), Lithium iron phosphate(LiFe) and Lithium-Ion (LiIon) batteries; maximum 6A charge current and maximum 50W charge power.

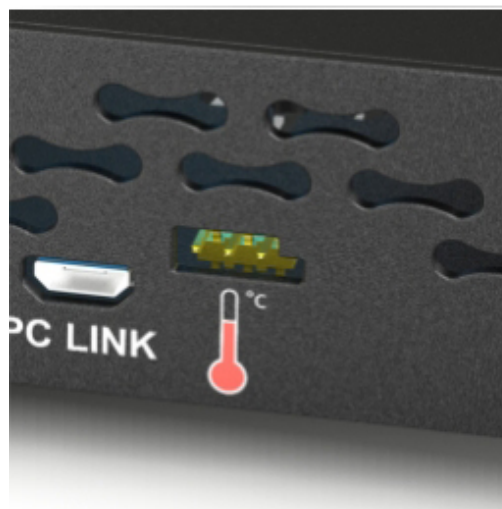
## Classic Design



## Dual Power AC/DC Input

AC input:100-240V

DC input:11-18V



## Temperature Probe Socket

If the temperature limit is reached,  
the process will be terminated.

\*This function is available by connecting  
optional temperature probe, which is not  
included in the package.



\* Temperature Probe  
SK-600040

## 2-6S XH Plug-in Balance Sockets



## Different Charging Modes

**LiPo / LiFe  
Lilon Batteries**

Normal Charge  
Balance Charge  
Fast Charge  
Discharge  
Storage

**NiCd/NiMH  
Batteries**

Normal Charge  
Auto Charge  
Discharge  
Cycle  
Re-Peak

**PB Battery**

Normal Charge  
& Discharge

## Special Features



Lithium Battery  
Balancer

SKYRC B6 AC+ V2 employs an individual-cell-voltage balancer. It isn't necessary to connect an external balancer for balance charging.



Program Data  
Store/Load

The charger can store up to 10 different charge/discharge profiles for your convenience. Users can call out these data at any time without any special program setting.



Battery Meter

The user can check battery's total voltage, the highest voltage, the lowest voltage and each cell's voltage by this charger.

BATT/PROGRAM → MAIN 12.54V → 4.18 4.18 4.18 U  
BATT METER → H: 4.181V L: 4.179V → 0.00 0.00 0.00 U



Battery Resistance  
Meter

The user can check battery's total resistance, the highest resistance, the lowest resistance and each cell's resistance.

BATT/PROGRAM → TOTAL: 40mΩ → 015 012 013 mΩ  
BATT RESISTANCE → H: 15mΩ L: 12mΩ



Maximum Safety

Automatic Charging Current Limit  
Capacity Limit  
Temperature Threshold  
Processing Time Limit

\* The Maximum Safety makes the charger safer than B6 AC+ V1

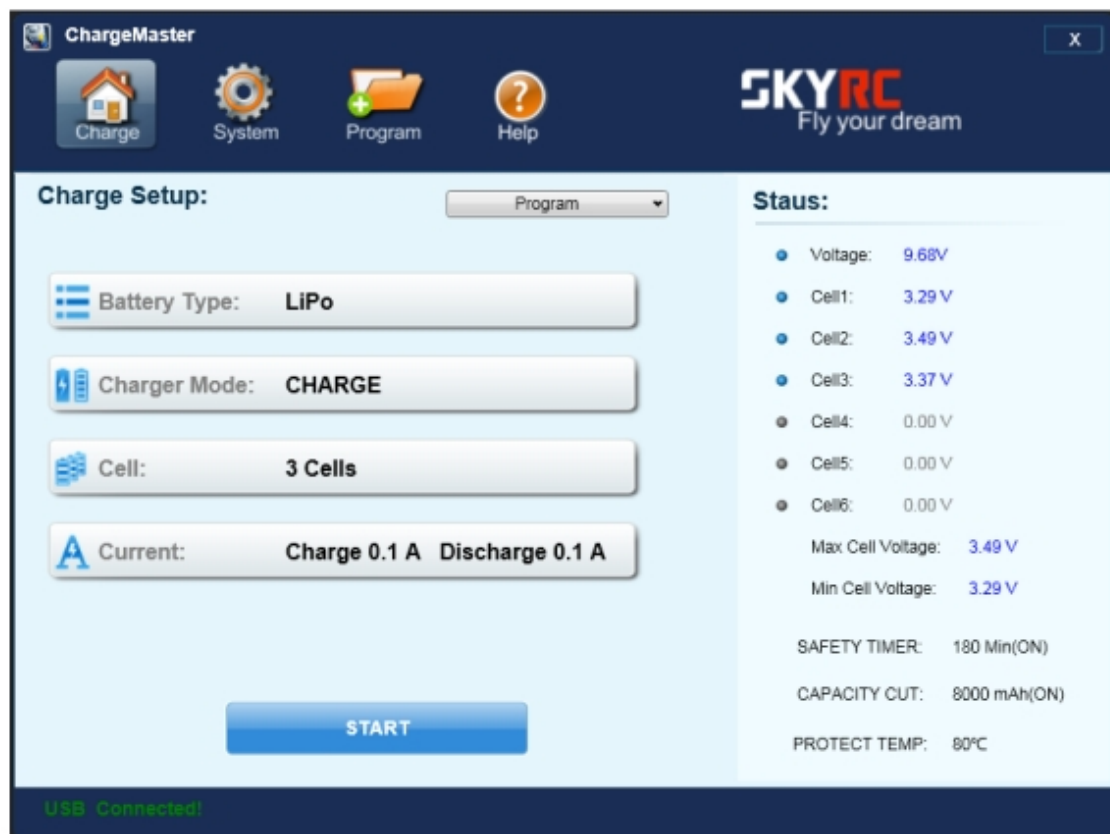


Terminal Voltage  
Control

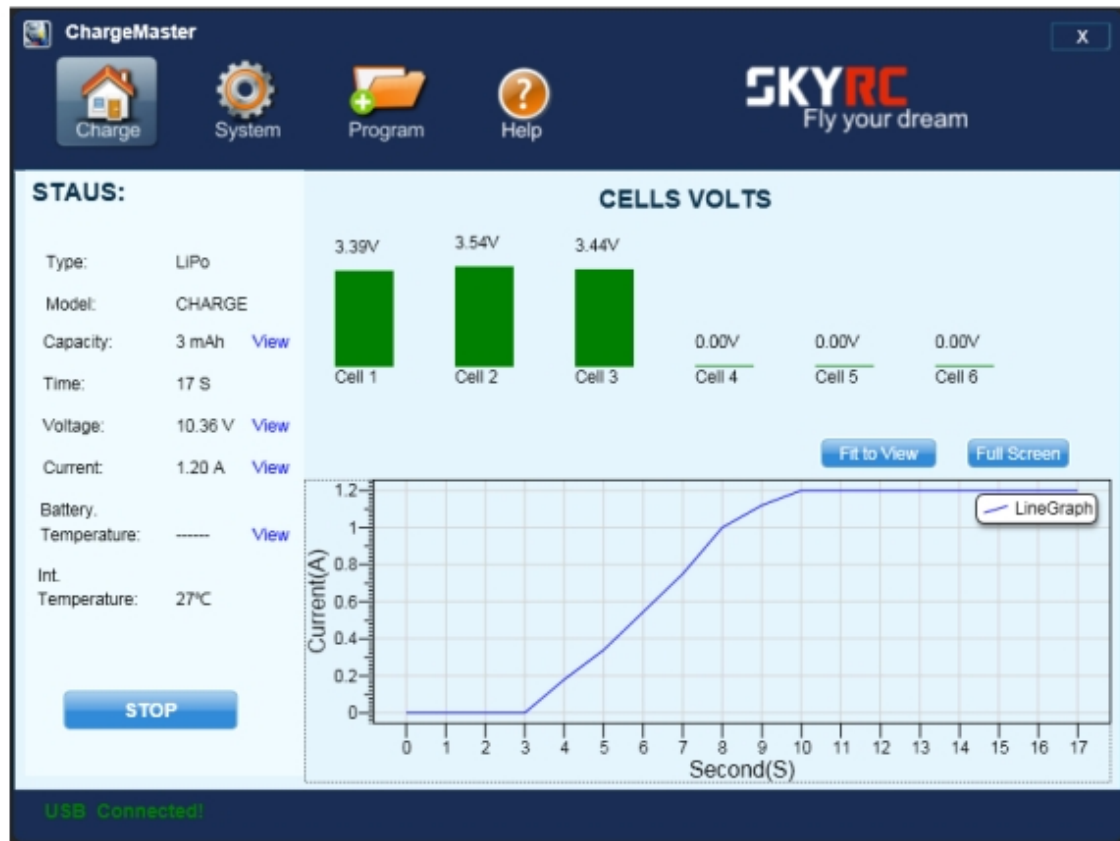
The charger allows user to set the charge/ discharge end voltage.

## PC Control

The user can monitor pack voltage, cell voltage and other data during the charging, view charge data in realtime graphs, and can also control charging and update firmware from "Charge Master".







Smart Phone Control  
& Monitor Via WiFi Module



## TECHNISCHE DATEN

DC Input Voltage	11-18V
AC Input Voltage	100-240V
Display Type	2x16 LCD
Display Backlight	Blue
Case Material	Metal
Cooling System	1 Built-in fan
Maximum Cells	LiPo/LiFe/LiIon: 1-6 cells NiMH/NiCd: 1-15 cells Pb: 2-20V
Charge Current	0.1-6.0A
Charge Wattage	50W
Discharge Current	0.1-2.0A
Discharge Wattage	5W
Weight	632g
Dimensions (LxWxH)	144x135x36mm

## DOWNLOADS



 [Charge Master Windows Software \(49,7 MiB\)](#)